

\$314,900 - 11216 134 Avenue, Edmonton

MLS® #E4461043

\$314,900

3 Bedroom, 0.50 Bathroom, 1,050 sqft

Single Family on 0.00 Acres

Rosslyn, Edmonton, AB

Potential Investment Property or First time buyer looking to get into the market in Rosslyn. 3 bedroom 1 bathroom with a large fenced yard and detached double garage.

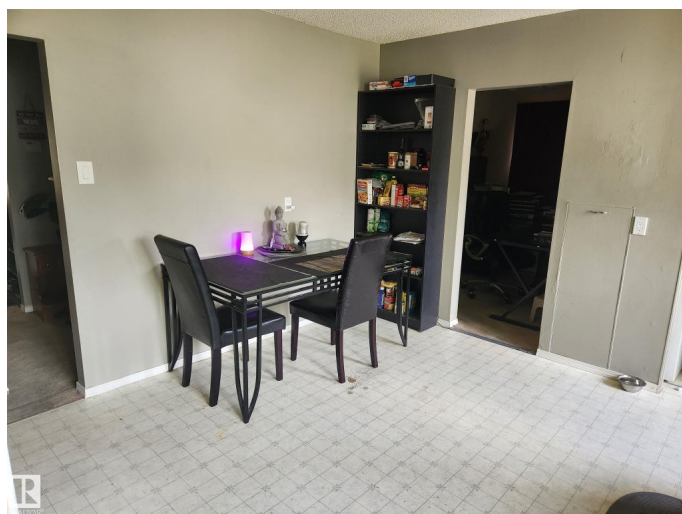
Built in 1959

Essential Information

MLS® #	E4461043
Price	\$314,900
Bedrooms	3
Bathrooms	0.50
Half Baths	1
Square Footage	1,050
Acres	0.00
Year Built	1959
Type	Single Family
Sub-Type	Detached Single Family
Style	Bungalow
Status	Active

Community Information

Address	11216 134 Avenue
Area	Edmonton
Subdivision	Rosslyn
City	Edmonton
County	ALBERTA
Province	AB



Postal Code T5E 1K5

Amenities

Amenities See Remarks

Parking Double Garage Detached, Front/Rear Drive Access

Interior

Appliances See Remarks

Heating Forced Air-1, Natural Gas

Stories 1

Has Basement Yes

Basement None, No Basement

Exterior

Exterior Wood, Vinyl

Exterior Features Back Lane, Fenced, Flat Site, Level Land, Shopping Nearby

Roof Asphalt Shingles

Construction Wood, Vinyl

Foundation Slab

Additional Information

Date Listed October 6th, 2025

Days on Market 1

Zoning Zone 01

DATA IS DEEMED RELIABLE BUT IS NOT GUARANTEED ACCURATE BY THE REALTORS® ASSOCIATION OF EDMONTON. COPYRIGHT 2025 BY THE REALTORS® ASSOCIATION OF EDMONTON. ALL RIGHTS RESERVED. Trademarks are owned or controlled by the Canadian Real Estate Association (CREA) and identify real estate professionals who are members of CREA (REALTOR®, REALTORS®) and/or the quality of services they provide (MLS®, Multiple Listing Service®)

Listing information last updated on October 7th, 2025 at 8:47pm MDT