

\$369,000 - 18708 57 Avenue, Edmonton

MLS® #E4459029

\$369,000

4 Bedroom, 2.00 Bathroom, 921 sqft
Single Family on 0.00 Acres

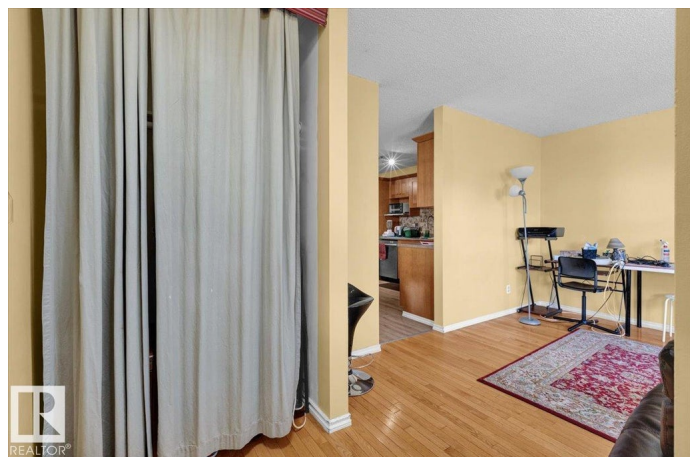
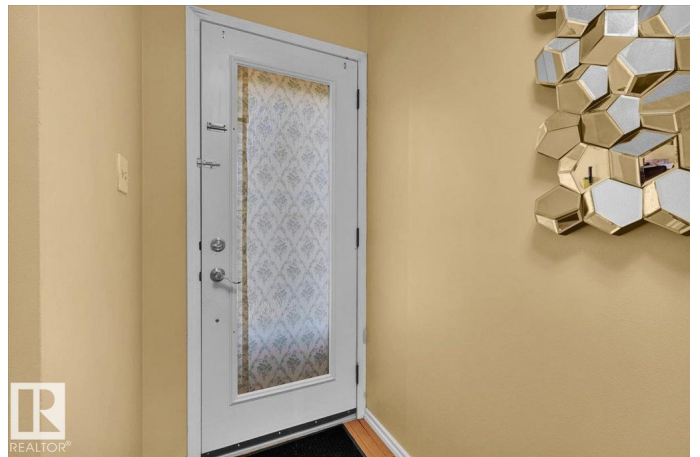
Jamieson Place, Edmonton, AB

Charming bungalow in desirable SW Edmonton! Enjoy a prime location just minutes from the Edmonton Country Club, West Edmonton Mall, ample parks, trails, and the North Saskatchewan River, with quick access to the Henday and Whitemud. This home offers a back lane, single detached garage, landscaped yard, and a fully fenced backyard with deck—perfect for relaxing or entertaining. Inside, the main level is filled with natural light and features a welcoming living room, dining area, kitchen, 3 bedrooms, and a 4pc bath. The fully finished basement expands your living space with a spacious rec room, bedroom, 3pc bath, laundry, and storage. A fantastic opportunity to own in a convenient, family-friendly location!

Built in 1984

Essential Information

MLS® #	E4459029
Price	\$369,000
Bedrooms	4
Bathrooms	2.00
Full Baths	2
Square Footage	921
Acres	0.00
Year Built	1984



Type	Single Family
Sub-Type	Detached Single Family
Style	Bungalow
Status	Active

Community Information

Address	18708 57 Avenue
Area	Edmonton
Subdivision	Jamieson Place
City	Edmonton
County	ALBERTA
Province	AB
Postal Code	T6M 2A4

Amenities

Amenities	Deck, See Remarks
Parking	Single Garage Detached

Interior

Appliances	Dishwasher-Built-In, Dryer, Freezer, Refrigerator, Stove-Electric, Washer
Heating	Forced Air-1, Natural Gas
Stories	2
Has Basement	Yes
Basement	Full, Finished

Exterior

Exterior	Wood, Stucco
Exterior Features	Back Lane, Fenced, Flat Site, Golf Nearby, Landscaped, Park/Reserve, Playground Nearby, Public Transportation, Schools, Shopping Nearby
Roof	Asphalt Shingles
Construction	Wood, Stucco
Foundation	Concrete Perimeter

Additional Information

Date Listed	September 22nd, 2025
Days on Market	16
Zoning	Zone 20

DATA IS DEEMED RELIABLE BUT IS NOT GUARANTEED ACCURATE BY THE REALTORS® ASSOCIATION OF EDMONTON. COPYRIGHT 2025 BY THE REALTORS® ASSOCIATION OF EDMONTON. ALL RIGHTS RESERVED. Trademarks are owned or controlled by the Canadian Real Estate Association (CREA) and identify real

estate professionals who are members of CREA (REALTOR®®, REALTORS®®) and/or the quality of services they provide (MLS®®, Multiple Listing Service®®)

Listing information last updated on October 8th, 2025 at 7:17pm MDT