

\$475,000 - 4836 A 53 Ave & 4836 B 53 Avenue, Cynthia

MLS® #E4458674

\$475,000

3 Bedroom, 1.50 Bathroom, 2,151 sqft
Single Family on 0.00 Acres

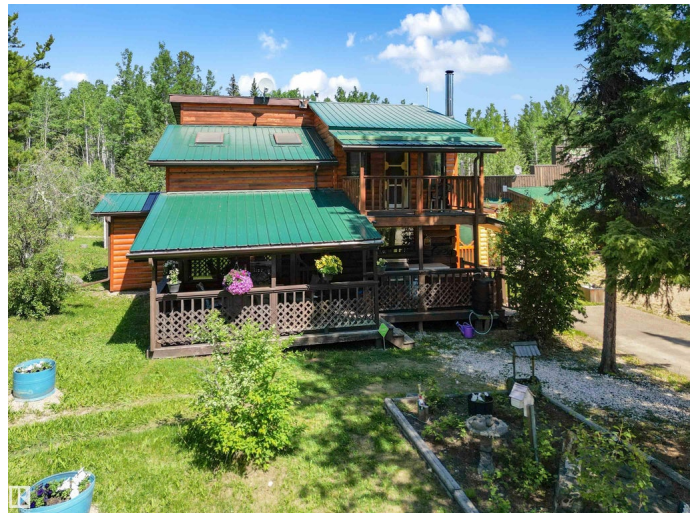
Cynthia, Cynthia, AB

Discover the charm and endless possibilities with this one-of-a-kind property, just shy of half an acre! The main home is a beautifully crafted custom log cabin featuring 3 beds, 2 offices, and 1.5 baths. Inside, you'll love the natural light from the skylights, the striking spiral staircase, and the cozy wood-burning stove. A durable metal roof and a charming, covered porch complete the package. Steps away, you'll find a separate guest cabin (also a log home) complete with a full kitchen, laundry, bedroom, and attached workshop. Guests, extended family, or potential rental opportunities are all easily accommodated. The guest cabin also offers its own covered porch, perfect for relaxing outdoors. Located adjacent to the Cyn City Saloon & RV Park (also for sale!), this property offers incredible potential as a personal retreat, income-producing investment, or live/work opportunity. Don't miss your chance to own this truly rare log cabin property with versatility and charm that's hard to find!

Built in 1985

Essential Information

MLS® #	E4458674
Price	\$475,000
Bedrooms	3



Bathrooms	1.50
Full Baths	1
Half Baths	1
Square Footage	2,151
Acres	0.00
Year Built	1985
Type	Single Family
Sub-Type	Detached Single Family
Style	2 Storey
Status	Active

Community Information

Address	4836 A 53 Ave & 4836 B 53 Avenue
Area	Cynthia
Subdivision	Cynthia
City	Cynthia
County	ALBERTA
Province	AB
Postal Code	T0E 0K0

Amenities

Amenities	Deck, Guest Suite, Skylight, See Remarks
Parking	2 Outdoor Stalls, Front Drive Access

Interior

Appliances	Fan-Ceiling, Hood Fan, Window Coverings, Dryer-Two, Refrigerators-Two, Stoves-Two, Washers-Two, Dishwasher-Two
Heating	Forced Air-1, Natural Gas
Fireplace	Yes
Fireplaces	Corner, Stone Facing, Woodstove
Stories	2
Has Basement	Yes
Basement	None, No Basement

Exterior

Exterior	Log
Exterior Features	Corner Lot, Flat Site, Landscaped, Level Land, Not Fenced, Playground Nearby, See Remarks
Roof	Metal

Construction	Log
Foundation	Slab

Additional Information

Date Listed	September 19th, 2025
Days on Market	52
Zoning	Zone 90

DATA IS DEEMED RELIABLE BUT IS NOT GUARANTEED ACCURATE BY THE REALTORS® ASSOCIATION OF EDMONTON. COPYRIGHT 2025 BY THE REALTORS® ASSOCIATION OF EDMONTON. ALL RIGHTS RESERVED. Trademarks are owned or controlled by the Canadian Real Estate Association (CREA) and identify real estate professionals who are members of CREA (REALTOR®, REALTORS®) and/or the quality of services they provide (MLS®, Multiple Listing Service®)

Listing information last updated on November 10th, 2025 at 12:32am MST