

Courtesy Of Selena Atkinson Of Exp Realty

## \$325,000 - 10530 151 Street, Edmonton

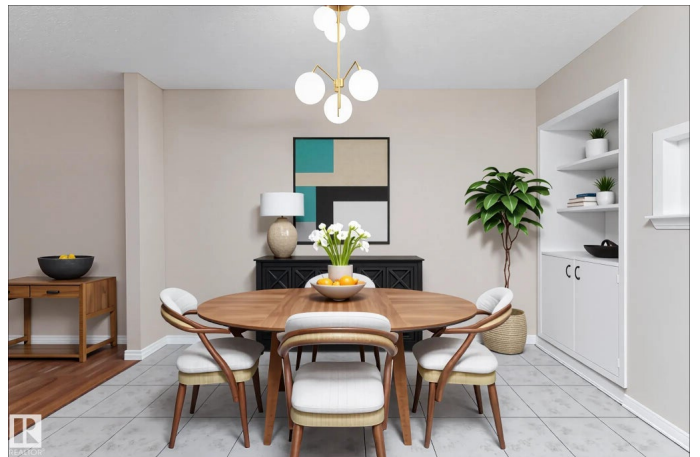
MLS® #E4458294

**\$325,000**

5 Bedroom, 2.00 Bathroom, 1,030 sqft  
Single Family on 0.00 Acres

Canora, Edmonton, AB

Stop the search because this half duplex bungalow has everything youâ€™ve been dreaming of and more. With 3 spacious bedrooms upstairs, 2 bathrooms. This home offers comfort, functionality, and room to grow. Sunlight streams through large windows, bouncing off gleaming hardwood floors and into the bright white kitchen, creating a warm and inviting atmosphere. The fully finished basement with soft carpet underfoot, a large family room-perfect for movie nights, 2 additional rooms, a full bath and plenty of storage space complete the basement. Step outside and escape into your own private oasis where mature trees and lush greenery surround the backyard, offering peace and privacy. Weekends are made for golfing at Meadowlark, enjoying picnics at the community park, letting the kids laugh and play at the nearby playground, and running errands with schools and shopping just minutes away. This isnâ€™t just a houseâ€”itâ€™s the lifestyle youâ€™ve been waiting for, and itâ€™s calling your name. \*Some photos virtually staged



Built in 1975

### Essential Information

MLS® #	E4458294
Price	\$325,000

Bedrooms	5
Bathrooms	2.00
Full Baths	2
Square Footage	1,030
Acres	0.00
Year Built	1975
Type	Single Family
Sub-Type	Half Duplex
Style	Bungalow
Status	Active

### **Community Information**

Address	10530 151 Street
Area	Edmonton
Subdivision	Canora
City	Edmonton
County	ALBERTA
Province	AB
Postal Code	T5P 1V3

### **Amenities**

Amenities	Deck, Recreation Room/Centre
Parking	Single Garage Detached

### **Interior**

Appliances	Dishwasher-Built-In, Dryer, Garage Control, Garage Opener, Microwave Hood Fan, Refrigerator, Stove-Electric, Washer
Heating	Forced Air-1, Natural Gas
Stories	1
Has Basement	Yes
Basement	Full, Finished

### **Exterior**

Exterior	Wood, Brick, Stucco
Exterior Features	Fenced, Golf Nearby, Landscaped, Picnic Area, Playground Nearby, Schools, Shopping Nearby
Roof	Asphalt Shingles
Construction	Wood, Brick, Stucco
Foundation	Concrete Perimeter

**School Information**

Elementary	Brightview School
Middle	Westmount Junior High
High	Ross Sheppard School

**Additional Information**

Date Listed	September 18th, 2025
Zoning	Zone 21

DATA IS DEEMED RELIABLE BUT IS NOT GUARANTEED ACCURATE BY THE REALTORS® ASSOCIATION OF EDMONTON. COPYRIGHT 2025 BY THE REALTORS® ASSOCIATION OF EDMONTON. ALL RIGHTS RESERVED.Trademarks are owned or controlled by the Canadian Real Estate Association (CREA) and identify real estate professionals who are members of CREA (REALTOR®, REALTORS®) and/or the quality of services they provide (MLS®, Multiple Listing Service®)

Listing information last updated on September 18th, 2025 at 4:03pm MDT