

## \$540,000 - 614 Kulawy Place, Edmonton

MLS® #E4457338

**\$540,000**

6 Bedroom, 3.00 Bathroom, 1,639 sqft  
Single Family on 0.00 Acres

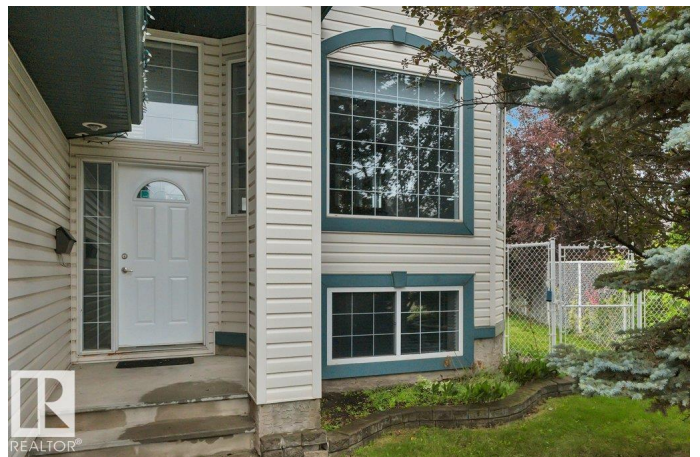
Kiniski Gardens, Edmonton, AB

This beautifully designed home, located in a quiet cul-de-sac on a spacious pie-shaped lot just minutes from the RAVINE, offers the perfect combination of space, style, and functionality for the entire family. The main floor features a bright, open-concept layout with vaulted ceilings throughout, creating a spacious and airy atmosphere. The kitchen, breakfast nook, and cozy living room are complete with a fireplace and large windows are flooded with natural light. Two main-floor bedrooms are generously sized, providing comfortable space for family or guests. Upstairs, you'll find a master retreat with a generous walk-in closet and an ensuite bathroom. The fully finished basement adds even more living space, offering three additional bedrooms, a full bathroom, and a versatile recreation room perfect for movie nights, a play area, or a home gym. Step outside to enjoy a spacious backyard, ideal for entertaining. Love the vinyl plank throughout, NO CARPET & the DBL attached garage provides convenience.

Built in 1999

### Essential Information

MLS® #	E4457338
Price	\$540,000



Bedrooms	6
Bathrooms	3.00
Full Baths	3
Square Footage	1,639
Acres	0.00
Year Built	1999
Type	Single Family
Sub-Type	Detached Single Family
Style	Bi-Level
Status	Active

### **Community Information**

Address	614 Kulawy Place
Area	Edmonton
Subdivision	Kiniski Gardens
City	Edmonton
County	ALBERTA
Province	AB
Postal Code	T6L 7E5

### **Amenities**

Amenities	Deck, Vaulted Ceiling
Parking Spaces	4
Parking	Double Garage Attached

### **Interior**

Interior Features	ensuite bathroom
Appliances	Dishwasher-Built-In, Dryer, Refrigerator, Stove-Electric, Washer, Window Coverings
Heating	Forced Air-1, Natural Gas
Fireplace	Yes
Fireplaces	Tile Surround
Stories	2
Has Basement	Yes
Basement	Full, Finished

### **Exterior**

Exterior	Wood, Vinyl
Exterior Features	Golf Nearby, Playground Nearby, Schools, Shopping Nearby

Roof	Asphalt Shingles
Construction	Wood, Vinyl
Foundation	Concrete Perimeter

### **School Information**

Elementary	Julia Kiniski School
Middle	Thelma Chalifoux School
High	W.P Wagner School

### **Additional Information**

Date Listed	September 11th, 2025
Days on Market	8
Zoning	Zone 29

DATA IS DEEMED RELIABLE BUT IS NOT GUARANTEED ACCURATE BY THE REALTORS® ASSOCIATION OF EDMONTON. COPYRIGHT 2025 BY THE REALTORS® ASSOCIATION OF EDMONTON. ALL RIGHTS RESERVED. Trademarks are owned or controlled by the Canadian Real Estate Association (CREA) and identify real estate professionals who are members of CREA (REALTOR®, REALTORS®) and/or the quality of services they provide (MLS®, Multiple Listing Service®)

Listing information last updated on September 18th, 2025 at 11:17pm MDT