

\$495,900 - 26 500 Lessard Drive, Edmonton

MLS® #E4456115

\$495,900

2 Bedroom, 3.00 Bathroom, 1,444 sqft

Condo / Townhouse on 0.00 Acres

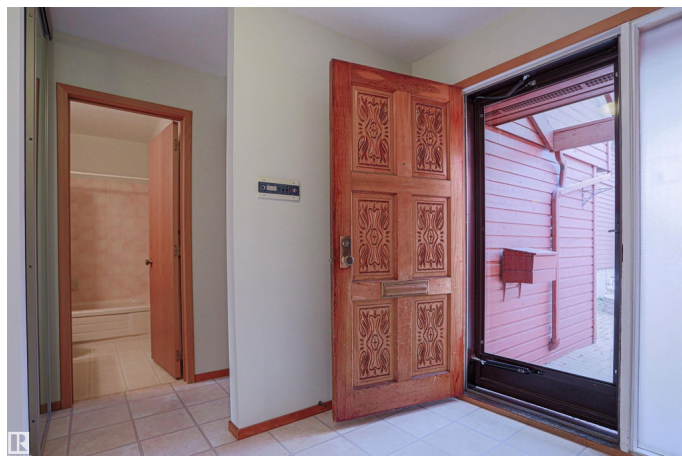
Gariepy, Edmonton, AB

Welcome to this quiet peaceful complex which borders the river and Edmonton Gold & Country Club. It is living in the country yet in the city. This very well planned bungalow has been nicely maintained over the years but needs a bit of upgrading to make it your own. Great open plan with premier bedroom and a large size ensuite. There is also an additional 4piece bath and a bedroom. Basement is fully developed with large recreational rooms. Lots of built in cabinets. 4 piece bathrooms, workshop, den and storage area complete with this level. Swim in the heated seasonal pool on those hot summer days, where you will meet your neighbors of the village.

Built in 1981

Essential Information

| | |
|----------------|-------------------|
| MLS® # | E4456115 |
| Price | \$495,900 |
| Bedrooms | 2 |
| Bathrooms | 3.00 |
| Full Baths | 3 |
| Square Footage | 1,444 |
| Acres | 0.00 |
| Year Built | 1981 |
| Type | Condo / Townhouse |
| Sub-Type | Townhouse |



| | |
|--------|----------|
| Style | Bungalow |
| Status | Active |

Community Information

| | |
|-------------|----------------------|
| Address | 26 500 Lessard Drive |
| Area | Edmonton |
| Subdivision | Gariepy |
| City | Edmonton |
| County | ALBERTA |
| Province | AB |
| Postal Code | T6M 1G1 |

Amenities

| | |
|-----------|--|
| Amenities | Air Conditioner, Parking-Visitor, Pool-Outdoor |
| Parking | Double Garage Attached |
| Has Pool | Yes |

Interior

| | |
|-------------------|--|
| Interior Features | ensuite bathroom |
| Appliances | Dishwasher-Built-In, Freezer, Garage Control, Garage Opener, Garburator, Refrigerator, Stacked Washer/Dryer, Stove-Electric, Vacuum System Attachments, Vacuum Systems, Window Coverings, See Remarks, Garage Heater |
| Heating | Forced Air-1, Natural Gas |
| Fireplace | Yes |
| Fireplaces | Brick Facing |
| Stories | 2 |
| Has Basement | Yes |
| Basement | Full, Finished |

Exterior

| | |
|-------------------|--|
| Exterior | Wood |
| Exterior Features | Flat Site, Golf Nearby, Landscaped, Public Transportation, Shopping Nearby |
| Roof | Clay Tile, Flat |
| Construction | Wood |
| Foundation | Concrete Perimeter |

Additional Information

| | |
|-------------|---------------------|
| Date Listed | September 2nd, 2025 |
|-------------|---------------------|

| | |
|----------------|---------|
| Days on Market | 6 |
| Zoning | Zone 20 |
| Condo Fee | \$804 |

DATA IS DEEMED RELIABLE BUT IS NOT GUARANTEED ACCURATE BY THE REALTORS® ASSOCIATION OF EDMONTON. COPYRIGHT 2025 BY THE REALTORS® ASSOCIATION OF EDMONTON. ALL RIGHTS RESERVED. Trademarks are owned or controlled by the Canadian Real Estate Association (CREA) and identify real estate professionals who are members of CREA (REALTOR®, REALTORS®) and/or the quality of services they provide (MLS®, Multiple Listing Service®)

Listing information last updated on September 8th, 2025 at 9:02am MDT