

\$179,900 - 255 Lancaster Terrace, Edmonton

MLS® #E4454974

\$179,900

3 Bedroom, 1.50 Bathroom, 1,280 sqft
Condo / Townhouse on 0.00 Acres

Dunluce, Edmonton, AB

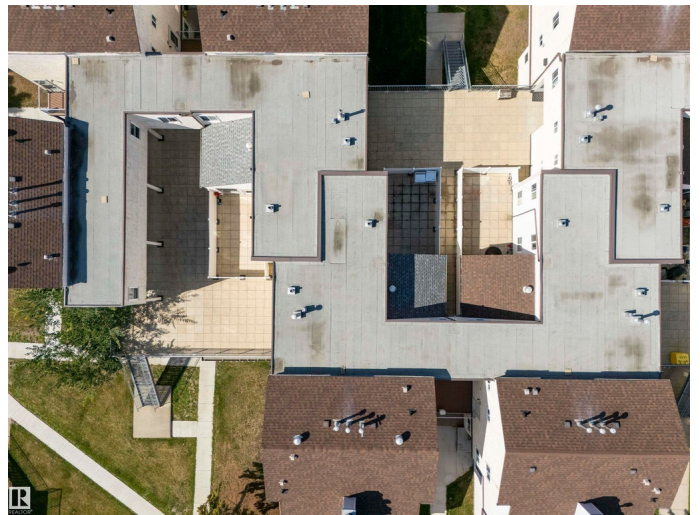
Excellent Value! This well-maintained 3-bedroom, 2-storey condo offers 1,280 sq. ft. of comfortable living space. Features include an ensuite bath, fresh paint, and upgraded laminate flooring. The spacious living room opens to a private, self-contained yard—ideal for relaxing or entertaining. Perfect for first-time buyers or as a solid investment opportunity. Condo fees include water and sewer. Priced to sell!

Built in 1977

Essential Information

MLS® #	E4454974
Price	\$179,900
Bedrooms	3
Bathrooms	1.50
Full Baths	1
Half Baths	1
Square Footage	1,280
Acres	0.00
Year Built	1977
Type	Condo / Townhouse
Sub-Type	Townhouse
Style	2 Storey
Status	Active

Community Information



Address	255 Lancaster Terrace
Area	Edmonton
Subdivision	Dunluce
City	Edmonton
County	ALBERTA
Province	AB
Postal Code	T5X 5T6

Amenities

Amenities	No Smoking Home
Parking	Underground

Interior

Appliances	Dryer, Refrigerator, Stove-Electric, Washer
Heating	Forced Air-1, Natural Gas
Stories	2
Has Basement	Yes
Basement	None, No Basement

Exterior

Exterior	Wood, Stucco
Exterior Features	Backs Onto Park/Trees
Roof	Asphalt Shingles
Construction	Wood, Stucco
Foundation	Slab

Additional Information

Date Listed	August 28th, 2025
Days on Market	17
Zoning	Zone 27
Condo Fee	\$484

DATA IS DEEMED RELIABLE BUT IS NOT GUARANTEED ACCURATE BY THE REALTORS® ASSOCIATION OF EDMONTON. COPYRIGHT 2025 BY THE REALTORS® ASSOCIATION OF EDMONTON. ALL RIGHTS RESERVED. Trademarks are owned or controlled by the Canadian Real Estate Association (CREA) and identify real estate professionals who are members of CREA (REALTOR®, REALTORS®) and/or the quality of services they provide (MLS®, Multiple Listing Service®)

Listing information last updated on September 14th, 2025 at 9:17am MDT