

Courtesy Of Trevor Bearchell Of RE/MAX Discover

\$199,400 - 127 2204 118 Street, Edmonton

MLS® #E4454830

\$199,400

2 Bedroom, 1.00 Bathroom, 959 sqft

Condo / Townhouse on 0.00 Acres

Skyrattler, Edmonton, AB

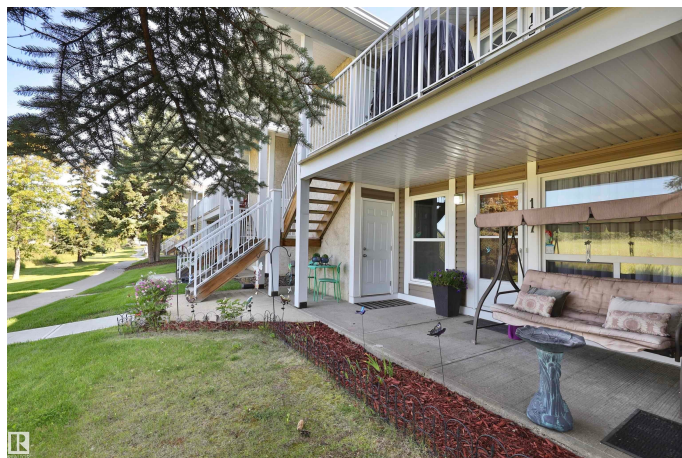
Discover this charming carriage-style condo, offering a single-level layout with the convenience of a ground-level entrance. Spanning 959 square feet, this home is designed for comfort and functionality. The spacious living room features a cozy wood-burning fireplace, perfect for quiet evenings or entertaining guests. The open dining area flows seamlessly into the kitchen, making daily living easy and inviting. With two generous bedrooms, there's room for family, guests, or a dedicated home office. The primary suite is complemented by a walk through closet that accesses the large main 4 pc. bath. This unit has in-suite laundry for ultimate convenience. Step outside and enjoy a southwest view of the ravine, providing a peaceful natural backdrop and plenty of light throughout the day and convenient access to walking trails. Ideal for first-time buyers, downsizers, or anyone seeking low-maintenance living with charm, this home blends comfort, privacy, and location all in one. Bonus crawlspace storage!

Built in 1979

Essential Information

MLS® # E4454830

Price \$199,400



Bedrooms	2
Bathrooms	1.00
Full Baths	1
Square Footage	959
Acres	0.00
Year Built	1979
Type	Condo / Townhouse
Sub-Type	Carriage
Style	Bungalow
Status	Active

Community Information

Address	127 2204 118 Street
Area	Edmonton
Subdivision	Skyrattler
City	Edmonton
County	ALBERTA
Province	AB
Postal Code	T6J 5K2

Amenities

Amenities	No Smoking Home, Parking-Visitor
Parking Spaces	1
Parking	See Remarks

Interior

Appliances	Dishwasher-Built-In, Dryer, Refrigerator, Stove-Electric, Washer, Window Coverings
Heating	Forced Air-1, Natural Gas
Fireplace	Yes
Fireplaces	Brick Facing
Stories	1
Has Basement	Yes
Basement	See Remarks

Exterior

Exterior	Wood, Vinyl
Exterior Features	Backs Onto Park/Trees, Ravine View, Shopping Nearby
Roof	Asphalt Shingles

Construction	Wood, Vinyl
Foundation	Concrete Perimeter

Additional Information

Date Listed	August 27th, 2025
Days on Market	1
Zoning	Zone 16
Condo Fee	\$230

DATA IS DEEMED RELIABLE BUT IS NOT GUARANTEED ACCURATE BY THE REALTORS® ASSOCIATION OF EDMONTON. COPYRIGHT 2025 BY THE REALTORS® ASSOCIATION OF EDMONTON. ALL RIGHTS RESERVED.Trademarks are owned or controlled by the Canadian Real Estate Association (CREA) and identify real estate professionals who are members of CREA (REALTOR®, REALTORS®) and/or the quality of services they provide (MLS®, Multiple Listing Service®)

Listing information last updated on August 28th, 2025 at 12:17am MDT