

\$499,900 - 10439 16 Avenue, Edmonton

MLS® #E4454738

\$499,900

3 Bedroom, 2.00 Bathroom, 1,116 sqft
Single Family on 0.00 Acres

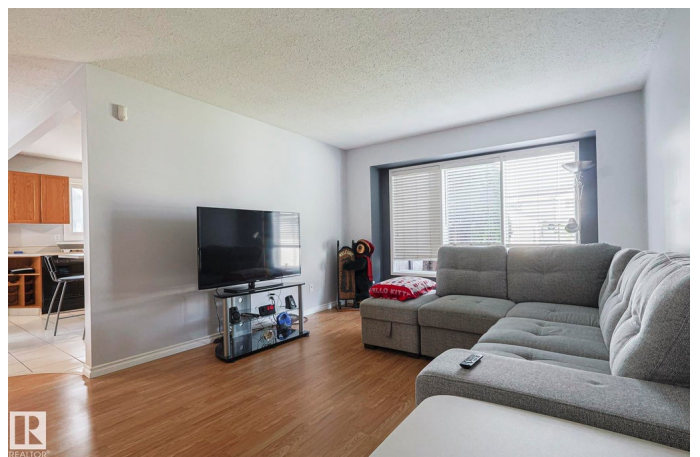
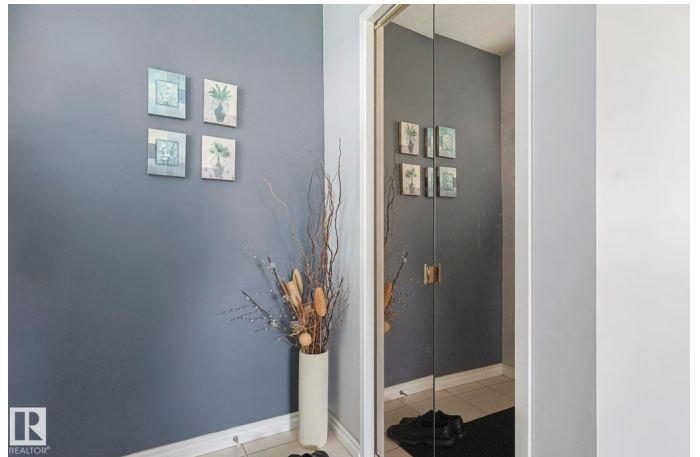
Bearspaw (Edmonton), Edmonton, AB

Welcome to the highly desirable community of Bearspaw! This immaculate 4-level split is truly move-in ready and perfect for your family. The bright island kitchen and included dining cabinet offer both style and function. Upstairs youâ€™ll find 3 spacious bedrooms and a 4 pc bathroom including a primary suite that easily accommodates a king-size bed along with a 3-piece ensuite. The cozy family room on the lower level boasts a beautiful stone wood-burning fireplaceâ€”ideal for family movie nights or gatherings. There is a rough in for an additional future bathroom which serves as extra storage room at the moment. The basement level provides an office space, more storage, and room to finish to your taste. Newer shingles and carpet on upper level. Complete with an insulated double garage and situated close to schools, shopping, and parks, this home has everything youâ€™ve been looking for!

Built in 1983

Essential Information

MLS® #	E4454738
Price	\$499,900
Bedrooms	3
Bathrooms	2.00
Full Baths	2



Square Footage	1,116
Acres	0.00
Year Built	1983
Type	Single Family
Sub-Type	Detached Single Family
Style	4 Level Split
Status	Active

Community Information

Address	10439 16 Avenue
Area	Edmonton
Subdivision	Bearspaw (Edmonton)
City	Edmonton
County	ALBERTA
Province	AB
Postal Code	T6J 5T1

Amenities

Amenities	Deck, Vinyl Windows
Parking Spaces	4
Parking	Double Garage Attached

Interior

Interior Features	ensuite bathroom
Appliances	Alarm/Security System, Dishwasher-Built-In, Dryer, Garage Control, Garage Opener, Microwave Hood Fan, Refrigerator, Storage Shed, Stove-Electric, Washer, Window Coverings
Heating	Forced Air-1, Natural Gas
Fireplace	Yes
Fireplaces	Stone Facing
Stories	3
Has Basement	Yes
Basement	Full, Partially Finished

Exterior

Exterior	Wood, Stucco
Exterior Features	Fenced, Flat Site, Fruit Trees/Shrubs, Public Transportation, Schools, Shopping Nearby
Roof	Asphalt Shingles

Construction	Wood, Stucco
Foundation	Concrete Perimeter

School Information

Elementary	Keheewin Elem.
Middle	Steinhauer

Additional Information

Date Listed	August 26th, 2025
Days on Market	1
Zoning	Zone 16

DATA IS DEEMED RELIABLE BUT IS NOT GUARANTEED ACCURATE BY THE REALTORS® ASSOCIATION OF EDMONTON. COPYRIGHT 2025 BY THE REALTORS® ASSOCIATION OF EDMONTON. ALL RIGHTS RESERVED.Trademarks are owned or controlled by the Canadian Real Estate Association (CREA) and identify real estate professionals who are members of CREA (REALTOR®, REALTORS®) and/or the quality of services they provide (MLS®, Multiple Listing Service®)

Listing information last updated on August 27th, 2025 at 11:18am MDT