

## \$649,000 - 47 Ridgemont Way, Sherwood Park

MLS® #E4453936

### \$649,000

4 Bedroom, 3.50 Bathroom, 2,213 sqft

Single Family on 0.00 Acres

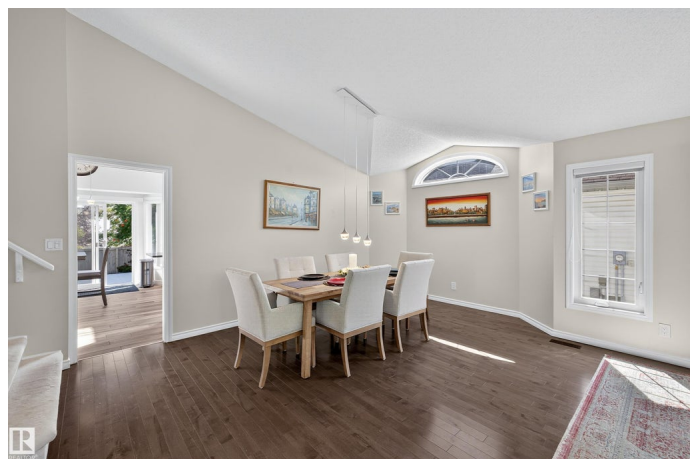
The Ridge (Sherwood Park), Sherwood Park, AB

Step into this beautifully renovated 2-storey home in The Ridge and feel right at home. With a stylish, open layout and newly finished basement, this home offers over 2200 sq. ft. of updated living space. Hardwood floors and vaulted ceilings create a bright, elegant main floor, while the modern kitchen features sleek tile, quartz countertops, and updated cabinetry filled with natural light. Upstairs, the spacious primary suite includes a walk-in closet and spa-like 5-piece ensuite. Two more bedrooms and a full bath complete the upper level. The basement adds incredible entertaining space with a wet bar, games area, and additional living space. Outside, enjoy a private backyard oasis with a huge multi-level deck and mature trees—perfect for summer gatherings. The oversized triple car garage provides ample space for vehicles, storage, or hobbies. A stunning, move-in-ready home in a fantastic location!

Built in 1990

### Essential Information

MLS® #	E4453936
Price	\$649,000
Bedrooms	4
Bathrooms	3.50



Full Baths	3
Half Baths	1
Square Footage	2,213
Acres	0.00
Year Built	1990
Type	Single Family
Sub-Type	Detached Single Family
Style	2 Storey
Status	Active

### Community Information

Address	47 Ridgemont Way
Area	Sherwood Park
Subdivision	The Ridge (Sherwood Park)
City	Sherwood Park
County	ALBERTA
Province	AB
Postal Code	T8A 5M9

### Amenities

Amenities	Deck, Wet Bar, See Remarks
Parking	Heated, Insulated, Triple Garage Attached

### Interior

Interior Features	ensuite bathroom
Appliances	Dishwasher-Built-In, Dryer, Garage Control, Microwave Hood Fan, Refrigerator, Stove-Electric, Washer
Heating	Forced Air-1, Natural Gas
Fireplace	Yes
Fireplaces	Glass Door, Mantel
Stories	3
Has Basement	Yes
Basement	Full, Finished

### Exterior

Exterior	Wood, Brick, Vinyl
Exterior Features	Fenced, Landscaped, Playground Nearby, Schools
Roof	Asphalt Shingles
Construction	Wood, Brick, Vinyl

Foundation                      Concrete Perimeter

**Additional Information**

Date Listed                      August 20th, 2025

Days on Market                1

Zoning                            Zone 25

DATA IS DEEMED RELIABLE BUT IS NOT GUARANTEED ACCURATE BY THE REALTORS® ASSOCIATION OF EDMONTON. COPYRIGHT 2025 BY THE REALTORS® ASSOCIATION OF EDMONTON. ALL RIGHTS RESERVED.Trademarks are owned or controlled by the Canadian Real Estate Association (CREA) and identify real estate professionals who are members of CREA (REALTOR®, REALTORS®) and/or the quality of services they provide (MLS®, Multiple Listing Service®)

Listing information last updated on August 21st, 2025 at 3:18pm MDT