

\$349,900 - 20516 21 Avenue, Edmonton

MLS® #E4452879

\$349,900

2 Bedroom, 2.50 Bathroom, 1,341 sqft

Single Family on 0.00 Acres

Stillwater, Edmonton, AB

Welcome to Stillwater! This modern 2-bedroom, 2.5-bathroom townhouse offers over 1,300 sq. ft. of stylish living, perfect for first-time buyers or investors. This is low maintenance living, but with no condo fees and no pet restrictions! Built in 2022, the home features a bright, open-concept main floor with a quartz island kitchen, stainless steel appliances, and a spacious living and dining area. A half bath and covered deck off the kitchen make entertaining easy. Upstairs, you'll find two generous bedrooms, and two full bathrooms. The primary suite easily fits a king bed, boasts a walk-in closet, and includes a private ensuite. Laundry is conveniently located on the upper floor. Enjoy the single attached garage with extra driveway parking, plus the perks of the Stillwater Homeowners Association, including a spray park, playground, and skating rink. Ideally located just minutes from Anthony Henday Drive and Currents of Windermere shopping. Move-in ready and waiting for you!

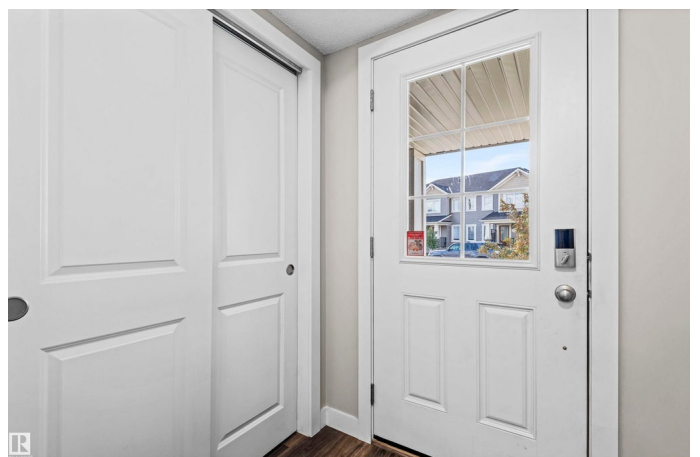
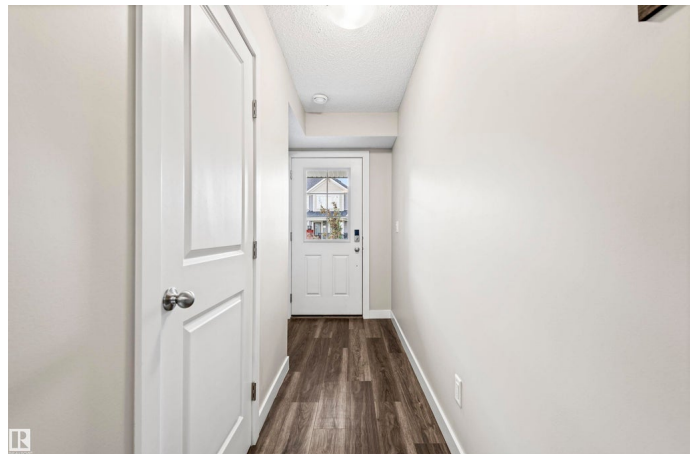
Built in 2022

Essential Information

MLS® # E4452879

Price \$349,900

Bedrooms 2



Bathrooms	2.50
Full Baths	2
Half Baths	1
Square Footage	1,341
Acres	0.00
Year Built	2022
Type	Single Family
Sub-Type	Residential Attached
Style	3 Storey
Status	Active

Community Information

Address	20516 21 Avenue
Area	Edmonton
Subdivision	Stillwater
City	Edmonton
County	ALBERTA
Province	AB
Postal Code	T6M 1M8

Amenities

Amenities	See Remarks
Parking	Front Drive Access, Single Garage Attached

Interior

Interior Features	ensuite bathroom
Appliances	Dishwasher-Built-In, Dryer, Garage Control, Garage Opener, Microwave Hood Fan, Refrigerator, Stove-Electric, Washer
Heating	Forced Air-1, Natural Gas
Stories	3
Has Basement	Yes
Basement	None, No Basement

Exterior

Exterior	Wood, Vinyl
Exterior Features	Environmental Reserve, Flat Site, Landscaped, Playground Nearby, Public Transportation, Shopping Nearby, Private Park Access
Roof	Asphalt Shingles
Construction	Wood, Vinyl

Foundation Slab

Additional Information

Date Listed August 14th, 2025
Days on Market 1
Zoning Zone 57
HOA Fees 400
HOA Fees Freq. Annually

DATA IS DEEMED RELIABLE BUT IS NOT GUARANTEED ACCURATE BY THE REALTORS® ASSOCIATION OF EDMONTON. COPYRIGHT 2025 BY THE REALTORS® ASSOCIATION OF EDMONTON. ALL RIGHTS RESERVED.Trademarks are owned or controlled by the Canadian Real Estate Association (CREA) and identify real estate professionals who are members of CREA (REALTOR®, REALTORS®) and/or the quality of services they provide (MLS®, Multiple Listing Service®)
Listing information last updated on August 15th, 2025 at 1:02pm MDT