

\$389,000 - 15309 137a Street, Edmonton

MLS® #E4452858

\$389,000

2 Bedroom, 2.50 Bathroom, 1,246 sqft

Single Family on 0.00 Acres

Carlton, Edmonton, AB

Nestled in a quiet cul-de-sac, this beautifully updated home offers the perfect blend of comfort, style, and convenience—just a short stroll to the community lake and moments from all your daily amenities along 137 Avenue. Recently refreshed w/ brand-new flooring & fresh paint throughout, it welcomes you w/ a bright, modern ambiance from the moment you step inside. The upper level features two generous bedrooms, each w/ its own 4-piece ensuite & plush carpet underfoot. On the main floor, a stylish L-shaped kitchen w/ a center island, ample cabinets, & generous counter space flows seamlessly into the inviting living room, where large windows frame views of the private deck & lush backyard—ideal for relaxing or entertaining. The finished basement offers a cozy recreation room, laundry area w/ washer & dryer, and a utility room equipped with a high-efficiency furnace and hot water tank. Complete with an attached garage and abundant storage, this home truly has it all. You're really going to love this one!

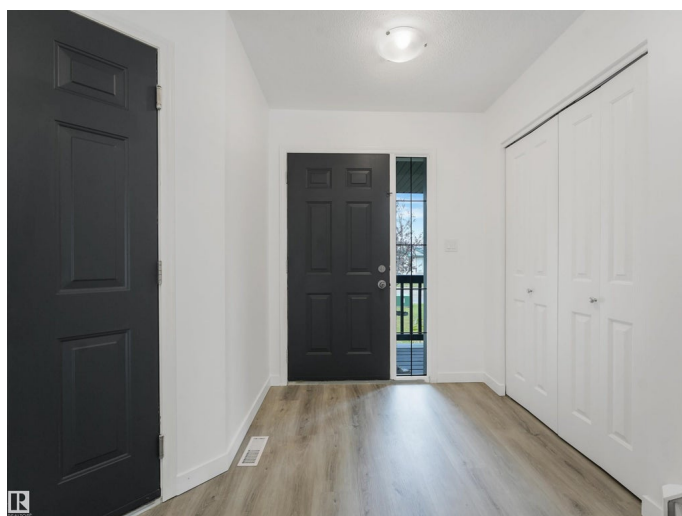
Built in 2002

Essential Information

MLS® # E4452858

Price \$389,000

Bedrooms 2



Bathrooms	2.50
Full Baths	2
Half Baths	1
Square Footage	1,246
Acres	0.00
Year Built	2002
Type	Single Family
Sub-Type	Half Duplex
Style	2 Storey
Status	Active

Community Information

Address	15309 137a Street
Area	Edmonton
Subdivision	Carlton
City	Edmonton
County	ALBERTA
Province	AB
Postal Code	T6V 1N5

Amenities

Amenities	Deck
Parking	Single Garage Attached
Is Waterfront	Yes

Interior

Interior Features	ensuite bathroom
Appliances	Dishwasher-Built-In, Dryer, Garage Opener, Oven-Microwave, Refrigerator, Stove-Electric, Washer
Heating	Forced Air-1, Natural Gas
Stories	3
Has Basement	Yes
Basement	Full, Finished

Exterior

Exterior	Wood, Vinyl
Exterior Features	Backs Onto Lake, Cul-De-Sac, Fenced, Flat Site, Landscaped, No Back Lane, No Through Road, Park/Reserve, Schools, Shopping Nearby, Stream/Pond

Roof	Asphalt Shingles
Construction	Wood, Vinyl
Foundation	Concrete Perimeter

Additional Information

Date Listed	August 13th, 2025
Days on Market	2
Zoning	Zone 27

DATA IS DEEMED RELIABLE BUT IS NOT GUARANTEED ACCURATE BY THE REALTORS® ASSOCIATION OF EDMONTON. COPYRIGHT 2025 BY THE REALTORS® ASSOCIATION OF EDMONTON. ALL RIGHTS RESERVED.Trademarks are owned or controlled by the Canadian Real Estate Association (CREA) and identify real estate professionals who are members of CREA (REALTOR®, REALTORS®) and/or the quality of services they provide (MLS®, Multiple Listing Service®)

Listing information last updated on August 15th, 2025 at 1:02pm MDT