

## \$349,900 - 32 723 172 Street, Edmonton

MLS® #E4452683

**\$349,900**

4 Bedroom, 3.50 Bathroom, 1,408 sqft

Condo / Townhouse on 0.00 Acres

Windermere, Edmonton, AB

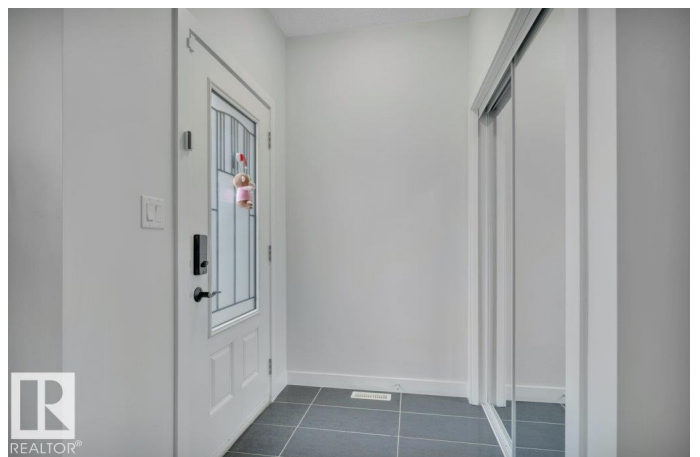
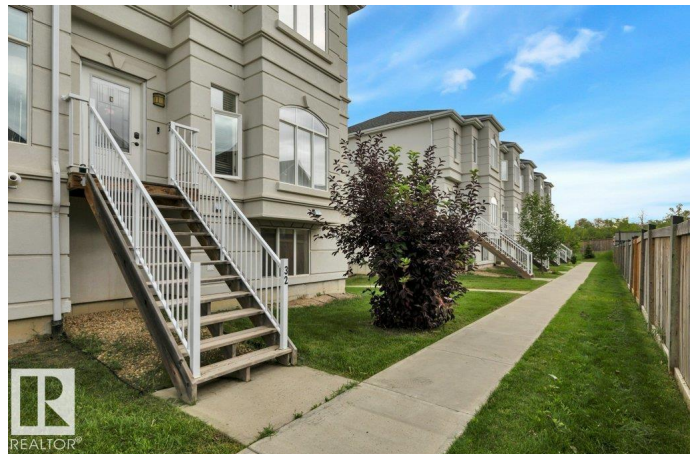
Experience the ultimate dream home in the coveted Windermere area where breathtaking luxury meets unparalleled convenience. This magnificent 4 bdm, 3.5-bath, 1408 sq. ft. townhouse is a haven of tranquility, boasting an open-concept main living area w/ sleek quartz counters, stainless steel appliances, ample counter space & seamless access to a spacious deck. A convenient designed desk area, pantry & main floor 2pc bath create the perfect blend of functionality & elegance. The upper level is a serene retreat, featuring 3 bdm, a 4 pc bath, a lavish 4 pc ensuite & spacious walk-in closet w/ a tranquil sitting area in the primary bedroom. The lower level is home to a cozy 4th bdm w/ a 3 pc ensuite, storage area & utility room. The attached double car garage is a bonus, offering water access & storage space. Visitor parking is conveniently located behind the home. This stunning townhouse is perfect for 1st time homebuyers, individuals down sizing, or anyone seeking a low-maintenance lifestyle without compromising on luxury.

Built in 2014

### Essential Information

MLS® # E4452683

Price \$349,900



Bedrooms	4
Bathrooms	3.50
Full Baths	3
Half Baths	1
Square Footage	1,408
Acres	0.00
Year Built	2014
Type	Condo / Townhouse
Sub-Type	Townhouse
Style	2 Storey
Status	Active

### Community Information

Address	32 723 172 Street
Area	Edmonton
Subdivision	Windermere
City	Edmonton
County	ALBERTA
Province	AB
Postal Code	T6W 2N6

### Amenities

Amenities	Ceiling 9 ft., Deck, Hot Water Natural Gas, Parking-Visitor
Parking Spaces	2
Parking	Double Garage Attached

### Interior

Interior Features	ensuite bathroom
Appliances	Dishwasher-Built-In, Dryer, Microwave Hood Fan, Refrigerator, Stove-Electric, Washer, Curtains and Blinds
Heating	Forced Air-1, Natural Gas
Stories	3
Has Basement	Yes
Basement	Partial, Finished

### Exterior

Exterior	Wood, Stucco
Exterior Features	Fenced, Golf Nearby, Landscaped, Paved Lane, Playground Nearby, Public Transportation, Schools, Shopping Nearby

Roof	Asphalt Shingles
Construction	Wood, Stucco
Foundation	Concrete Perimeter

### **Additional Information**

Date Listed	August 13th, 2025
Days on Market	2
Zoning	Zone 56
Condo Fee	\$357

DATA IS DEEMED RELIABLE BUT IS NOT GUARANTEED ACCURATE BY THE REALTORS® ASSOCIATION OF EDMONTON. COPYRIGHT 2025 BY THE REALTORS® ASSOCIATION OF EDMONTON. ALL RIGHTS RESERVED. Trademarks are owned or controlled by the Canadian Real Estate Association (CREA) and identify real estate professionals who are members of CREA (REALTOR®, REALTORS®) and/or the quality of services they provide (MLS®, Multiple Listing Service®)

Listing information last updated on August 15th, 2025 at 1:02pm MDT