

Courtesy Of Christina A Reid Of Century 21 Leading

\$537,547 - 4793 Cawsey Terrace, Edmonton

MLS® #E4450656

\$537,547

3 Bedroom, 2.50 Bathroom, 1,708 sqft
Single Family on 0.00 Acres

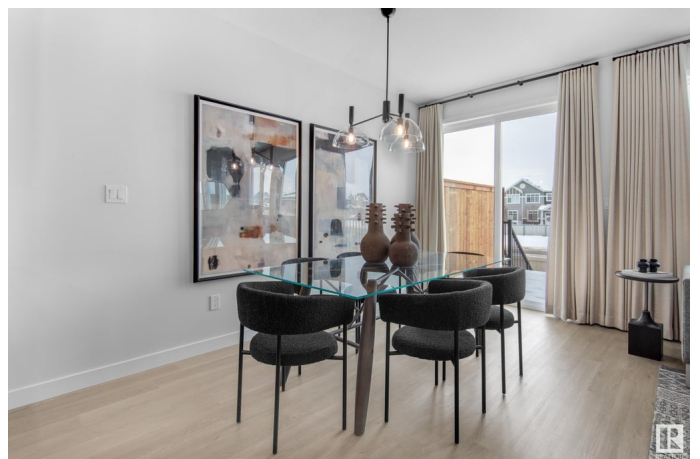
Chappelle Area, Edmonton, AB

LOT SIZE: 13,822 SQ FT Looking for a DOUBLE FRONT ATTACHED GARAGE DUPLEX with an oversized lot with a SOUTH FACING YARD? This new build will offer more than 170 ft of back yard space. The Mackay is our 1708 sq.ft. 3 bedroom home located in Edmonton's award winning community of Chappelle Gardens, just steps away from Donald R. Getty (K-9 School). This spacious plan includes a beautifully upgraded kitchen, equipped with 3CM quartz, a chimney hoodfan, electric range, built in microwave, french door fridge with internal ice/water dispenser and dishwasher. The living room features a fireplace. We've also included a SIDE ENTRY, perfect for future basement development. Upstairs, all 3 bedrooms and the bonus room are spacious and we've equipped the laundry room with a washer/dryer. The primary ensuite offers an upgraded acrylic glass shower and dual vanities Please note: Photographs are of show home.

Built in 2025

Essential Information

MLS® #	E4450656
Price	\$537,547
Bedrooms	3
Bathrooms	2.50



Full Baths	2
Half Baths	1
Square Footage	1,708
Acres	0.00
Year Built	2025
Type	Single Family
Sub-Type	Half Duplex
Style	2 Storey
Status	Active

Community Information

Address	4793 Cawsey Terrace
Area	Edmonton
Subdivision	Chappelle Area
City	Edmonton
County	ALBERTA
Province	AB
Postal Code	T6W 5M7

Amenities

Amenities	Carbon Monoxide Detectors, Ceiling 9 ft., Detectors Smoke, Smart/Program. Thermostat, HRV System
Parking	Double Garage Attached

Interior

Interior Features	ensuite bathroom
Appliances	Dishwasher-Built-In, Garage Control, Garage Opener, Oven-Microwave, Refrigerator, Stacked Washer/Dryer, Stove-Electric
Heating	Forced Air-1, Natural Gas
Fireplace	Yes
Fireplaces	Insert
Stories	2
Has Basement	Yes
Basement	Full, Unfinished

Exterior

Exterior	Wood, Vinyl
Exterior Features	Airport Nearby, Golf Nearby, Partially Landscaped, Public Transportation, Schools, Shopping Nearby

Roof	Asphalt Shingles
Construction	Wood, Vinyl
Foundation	Concrete Perimeter

School Information

Elementary	DONALD R. GETTY
Middle	St. Thomas Aquinas
High	DR. ANNE ANDERSON

Additional Information

Date Listed	July 31st, 2025
Days on Market	2
Zoning	Zone 55
HOA Fees	426
HOA Fees Freq.	Annually

DATA IS DEEMED RELIABLE BUT IS NOT GUARANTEED ACCURATE BY THE REALTORS® ASSOCIATION OF EDMONTON. COPYRIGHT 2025 BY THE REALTORS® ASSOCIATION OF EDMONTON. ALL RIGHTS RESERVED. Trademarks are owned or controlled by the Canadian Real Estate Association (CREA) and identify real estate professionals who are members of CREA (REALTOR®, REALTORS®) and/or the quality of services they provide (MLS®, Multiple Listing Service®)

Listing information last updated on August 2nd, 2025 at 1:17pm MDT