

## \$264,900 - 32 4029 Orchards Drive, Edmonton

MLS® #E4450546

**\$264,900**

2 Bedroom, 1.00 Bathroom, 856 sqft

Condo / Townhouse on 0.00 Acres

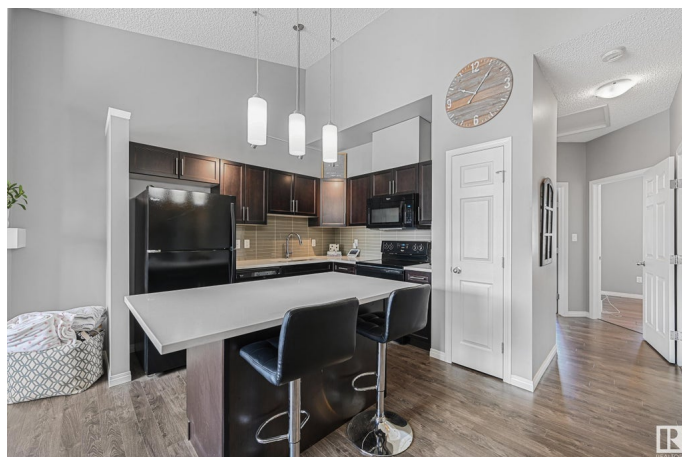
The Orchards At Ellerslie, Edmonton, AB

Welcome to The Orchards at Ellerslie! This bright and well-maintained 2-bedroom, 856 sq ft townhome offers a functional layout with all living space on the upper level. The open-concept kitchen flows into a spacious living room featuring large windows, an electric fireplace, and access to a sunny upper-level patio. Enjoy the convenience of in-suite laundry, a 4-piece bathroom, and an attached single garage on the lower level. Located across from green space, this home is part of a vibrant HOA community that includes full access to the Clubhouse—featuring a skating rink, tennis courts, spray park, playground, and year-round programs. Pet-friendly and with low condo fees, this home is ideal for first-time buyers or investors looking for low-maintenance living in a growing south Edmonton neighbourhood.

Built in 2014

### Essential Information

MLS® #	E4450546
Price	\$264,900
Bedrooms	2
Bathrooms	1.00
Full Baths	1
Square Footage	856
Acres	0.00



Year Built	2014
Type	Condo / Townhouse
Sub-Type	Townhouse
Style	2 Storey
Status	Active

### Community Information

Address	32 4029 Orchards Drive
Area	Edmonton
Subdivision	The Orchards At Ellerslie
City	Edmonton
County	ALBERTA
Province	AB
Postal Code	T6X 1V2

### Amenities

Amenities	Closet Organizers, Deck, Detectors Smoke, Front Porch, No Smoking Home, Vinyl Windows
Parking	Single Garage Attached

### Interior

Appliances	Dishwasher-Built-In, Dryer, Garage Control, Garage Opener, Microwave Hood Fan, Refrigerator, Stove-Electric, Washer, Window Coverings, TV Wall Mount
Heating	Forced Air-1, Natural Gas
Fireplace	Yes
Fireplaces	Insert
Stories	2
Has Basement	Yes
Basement	None, No Basement

### Exterior

Exterior	Wood, Vinyl
Exterior Features	Back Lane, Flat Site, Fruit Trees/Shrubs, Golf Nearby, Landscaped, Level Land, No Through Road, Park/Reserve, Picnic Area, Playground Nearby, Schools, Shopping Nearby
Roof	Asphalt Shingles
Construction	Wood, Vinyl
Foundation	Concrete Perimeter

**Additional Information**

Date Listed	July 31st, 2025
Days on Market	2
Zoning	Zone 53
HOA Fees	450
HOA Fees Freq.	Annually
Condo Fee	\$252

DATA IS DEEMED RELIABLE BUT IS NOT GUARANTEED ACCURATE BY THE REALTORS® ASSOCIATION OF EDMONTON. COPYRIGHT 2025 BY THE REALTORS® ASSOCIATION OF EDMONTON. ALL RIGHTS RESERVED.Trademarks are owned or controlled by the Canadian Real Estate Association (CREA) and identify real estate professionals who are members of CREA (REALTOR®, REALTORS®) and/or the quality of services they provide (MLS®, Multiple Listing Service®)

Listing information last updated on August 2nd, 2025 at 5:32am MDT