

Courtesy Of Michel Estephan Of RE/MAX Elite

## \$599,900 - 12 Elsinore Place, Edmonton

MLS® #E4450040

**\$599,900**

5 Bedroom, 3.50 Bathroom, 2,239 sqft

Single Family on 0.00 Acres

Elsinore, Edmonton, AB

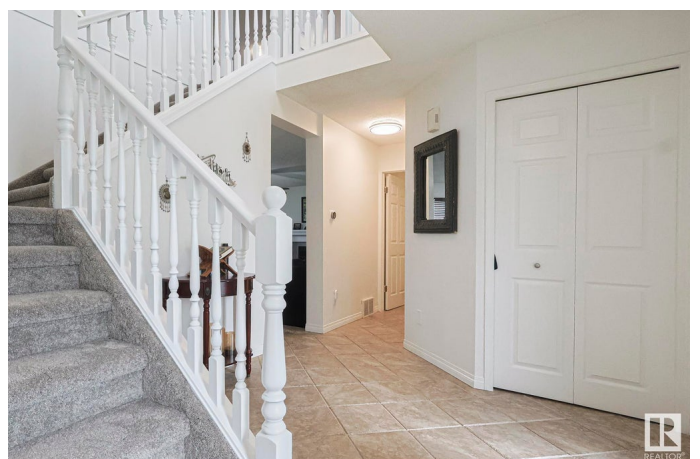
**TERRIFIC FAMILY 2 STOREY!** This spacious 5 bedroom, 4 bath home sits on a massive lot in desirable Elsinore. Featuring maple hardwood floors & over 2200 sq.ft on 2 levels with a developed basement – there is plenty of room for the whole family. The bright and open foyer opens to the living & formal dining area. The sunny kitchen has quality s/s appliances, large island, plenty of counterspace & breakfast nook opening to the backyard. Step down into the sunken family room which has nice big windows & a fireplace. The main level is completed with a 2 pce bath & laundry room. Upstairs has 3 generous bedrooms, family bathroom & large primary suite with a bay window, w/i closet & ensuite, corner tub, separate glass shower & double sinks. The professionally finished basement offers lots more living space with 2 additional bedrooms, bath & massive rec room. The attractive exterior has a cedar shake roof, fenced yard & patio. Close to major shopping & just minutes from CFB Edmonton – the location is fantastic!

Built in 1991

### Essential Information

MLS® # E4450040

Price \$599,900



Bedrooms	5
Bathrooms	3.50
Full Baths	3
Half Baths	1
Square Footage	2,239
Acres	0.00
Year Built	1991
Type	Single Family
Sub-Type	Detached Single Family
Style	2 Storey
Status	Active

### **Community Information**

Address	12 Elsinore Place
Area	Edmonton
Subdivision	Elsinore
City	Edmonton
County	ALBERTA
Province	AB
Postal Code	T5X 5W3

### **Amenities**

Amenities	Detectors Smoke, Patio, See Remarks
Parking Spaces	4
Parking	Double Garage Attached

### **Interior**

Interior Features	ensuite bathroom
Appliances	Dishwasher-Built-In, Dryer, Garage Opener, Refrigerator, Stove-Electric, Washer
Heating	Forced Air-1, Natural Gas
Fireplace	Yes
Fireplaces	Mantel, Tile Surround
Stories	3
Has Basement	Yes
Basement	Full, Finished

### **Exterior**

Exterior	Wood, Vinyl
----------	-------------

Exterior Features Fenced, Flat Site, Landscaped, Playground Nearby, Public Transportation, Schools, Shopping Nearby, See Remarks  
Roof Cedar Shakes  
Construction Wood, Vinyl  
Foundation Concrete Perimeter

**Additional Information**

Date Listed July 28th, 2025  
Days on Market 5  
Zoning Zone 27

DATA IS DEEMED RELIABLE BUT IS NOT GUARANTEED ACCURATE BY THE REALTORS® ASSOCIATION OF EDMONTON. COPYRIGHT 2025 BY THE REALTORS® ASSOCIATION OF EDMONTON. ALL RIGHTS RESERVED. Trademarks are owned or controlled by the Canadian Real Estate Association (CREA) and identify real estate professionals who are members of CREA (REALTOR®, REALTORS®) and/or the quality of services they provide (MLS®, Multiple Listing Service®)

Listing information last updated on August 2nd, 2025 at 2:47pm MDT