

## \$489,900 - 2427 28b Avenue, Edmonton

MLS® #E4448664

**\$489,900**

3 Bedroom, 3.50 Bathroom, 1,421 sqft

Single Family on 0.00 Acres

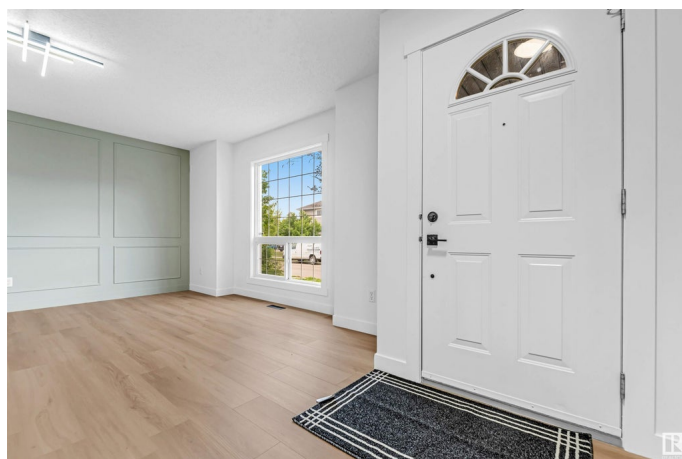
Silver Berry, Edmonton, AB

Welcome to Stunning Renovated Home Backing onto Park in Silverberry! Beautifully updated and move-in ready, this fully finished Detached 3 bedroom, 3.5 bathroom home offers over 2,000 sq ft of comfortable living space. It features a double Detach garage and backs directly onto a Silverberry park . The main floor showcases a modern kitchen with upgraded tile backsplash, countertops, and cabinetry, complemented by a spacious dining and living area with newer vinyl flooring. Upstairs, enjoy 3 generous bedrooms including a large primary with full ensuite. Additional updates include: new shingles, fresh paint, newer carpet, and more. The fully finished basement is ideal for entertaining, featuring rough-ins for a home theatre , extra bedroom potential and a newly renovated 3-piece bath. Unbeatable location â€” just a 2-minute drive to the Meadows Rec Centre, shopping centre, and high school. A must-see for families or investors!

Built in 2004

### Essential Information

MLS® #	E4448664
Price	\$489,900
Bedrooms	3
Bathrooms	3.50



Full Baths	3
Half Baths	1
Square Footage	1,421
Acres	0.00
Year Built	2004
Type	Single Family
Sub-Type	Detached Single Family
Style	2 Storey
Status	Active

### Community Information

Address	2427 28b Avenue
Area	Edmonton
Subdivision	Silver Berry
City	Edmonton
County	ALBERTA
Province	AB
Postal Code	T6T 2A3

### Amenities

Amenities	Detectors Smoke, No Animal Home, No Smoking Home
Parking	Double Garage Detached

### Interior

Interior Features	ensuite bathroom
Appliances	Dishwasher-Built-In, Dryer, Garage Opener, Refrigerator, Stove-Electric, Washer
Heating	Forced Air-1, Natural Gas
Stories	3
Has Basement	Yes
Basement	Full, Finished

### Exterior

Exterior	Wood, Vinyl
Exterior Features	Back Lane, Backs Onto Park/Trees, Fenced, Landscaped, Playground Nearby, Public Transportation, Schools
Roof	Asphalt Shingles
Construction	Wood, Vinyl
Foundation	Concrete Perimeter

**Additional Information**

Date Listed                July 18th, 2025  
Days on Market        1  
Zoning                    Zone 30

DATA IS DEEMED RELIABLE BUT IS NOT GUARANTEED ACCURATE BY THE REALTORS® ASSOCIATION OF EDMONTON. COPYRIGHT 2025 BY THE REALTORS® ASSOCIATION OF EDMONTON. ALL RIGHTS RESERVED.Trademarks are owned or controlled by the Canadian Real Estate Association (CREA) and identify real estate professionals who are members of CREA (REALTOR®, REALTORS®) and/or the quality of services they provide (MLS®, Multiple Listing Service®)  
Listing information last updated on July 19th, 2025 at 2:32pm MDT