

## \$509,900 - 1043 58 Street, Edmonton

MLS® #E4447477

**\$509,900**

6 Bedroom, 4.00 Bathroom, 1,738 sqft

Single Family on 0.00 Acres

Sakaw, Edmonton, AB

Perfect for a growing family! This spacious 1737 sqft 5-level split is tucked into a quiet cul-de-sac on a large lot backing onto a scenic walking trail. With 6 bedrooms and 4 full bathrooms, there's room for everyone. The main floor features a bright living and dining area, and a large updated kitchen with plenty of storage and stainless steel appliances. Vinyl plank flooring flows through the main levels. A cozy family room with gas fireplace opens to the back deck and spacious backyard with fire pit – ideal for entertaining. A main floor bedroom and 3 pc bath offer added flexibility. Upstairs, you'll find 3 more bedrooms and a 4 pc bath, including the primary retreat with walk-in closet and 4 pc ensuite. The lower levels include 2 bedrooms, another 4 pc bath, laundry, a spacious rec room, and ample storage. Updates: Shingles (2025), Furnaces (2019), windows (2019), HWT (2019), appliances (2019). Close to schools, parks, shopping, and quick access to the Anthony Henday!

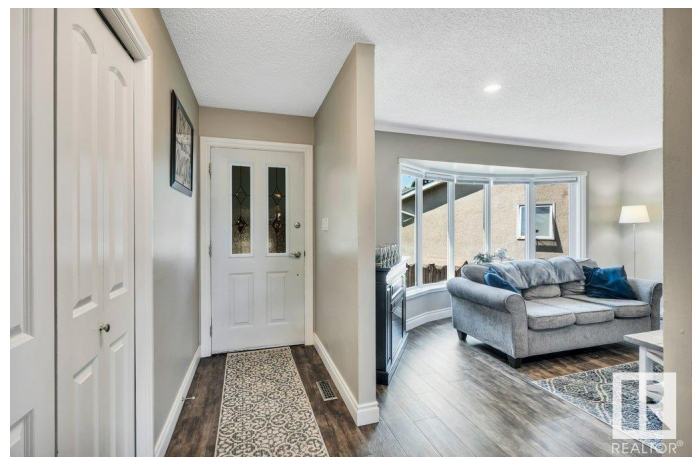
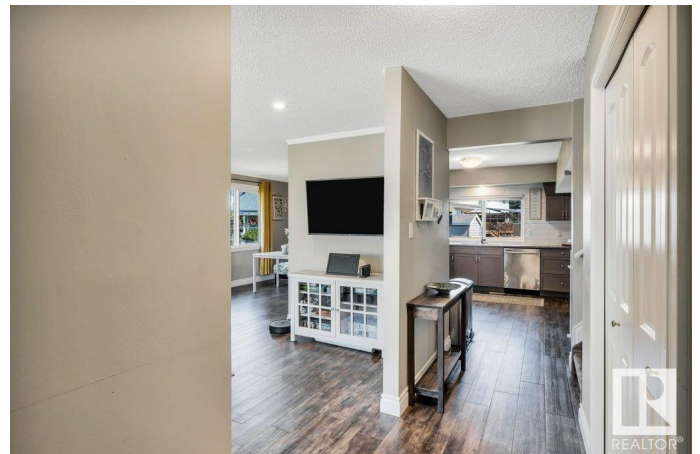
Built in 1980

### Essential Information

MLS® # E4447477

Price \$509,900

Bedrooms 6



Bathrooms	4.00
Full Baths	4
Square Footage	1,738
Acres	0.00
Year Built	1980
Type	Single Family
Sub-Type	Detached Single Family
Style	5 Level Split
Status	Active

### **Community Information**

Address	1043 58 Street
Area	Edmonton
Subdivision	Sakaw
City	Edmonton
County	ALBERTA
Province	AB
Postal Code	T6L 3W1

### **Amenities**

Amenities	Deck
Parking	Double Garage Attached

### **Interior**

Interior Features	ensuite bathroom
Appliances	Dishwasher-Built-In, Dryer, Garage Control, Garage Opener, Microwave Hood Fan, Refrigerator, Stove-Electric, Washer
Heating	Forced Air-2, Natural Gas
Fireplace	Yes
Fireplaces	Brick Facing, Mantel
Stories	5
Has Basement	Yes
Basement	Full, Finished

### **Exterior**

Exterior	Wood, Brick, Vinyl
Exterior Features	Fenced, Fruit Trees/Shrubs, Playground Nearby, Public Transportation, Schools
Roof	Asphalt Shingles

Construction	Wood, Brick, Vinyl
Foundation	Concrete Perimeter

**Additional Information**

Date Listed	July 12th, 2025
Days on Market	1
Zoning	Zone 29

DATA IS DEEMED RELIABLE BUT IS NOT GUARANTEED ACCURATE BY THE REALTORS® ASSOCIATION OF EDMONTON. COPYRIGHT 2025 BY THE REALTORS® ASSOCIATION OF EDMONTON. ALL RIGHTS RESERVED.Trademarks are owned or controlled by the Canadian Real Estate Association (CREA) and identify real estate professionals who are members of CREA (REALTOR®, REALTORS®) and/or the quality of services they provide (MLS®, Multiple Listing Service®)

Listing information last updated on July 13th, 2025 at 6:32am MDT