

\$858,800 - 16 Quesnell Crescent, Edmonton

MLS® #E4447458

\$858,800

3 Bedroom, 3.00 Bathroom, 2,264 sqft

Single Family on 0.00 Acres

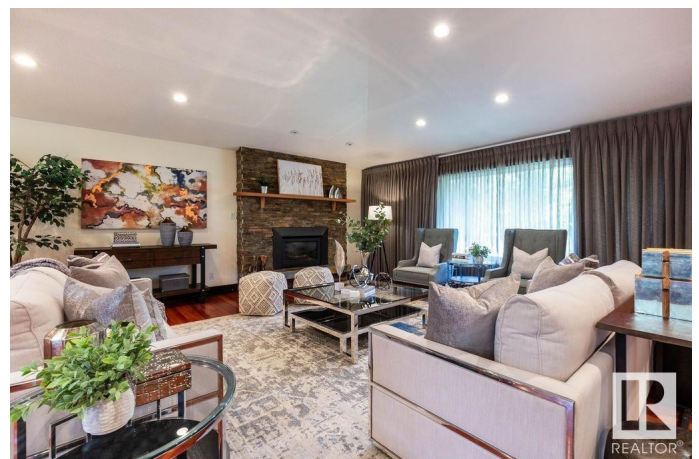
Quesnell Heights, Edmonton, AB

Welcome to Quesnellâ€™one of Edmontonâ€™s most desirable neighborhoods! This stunning 3-bedroom bungalow offers over 2200 sq ft of wide open living with vaulted ceilings(total living space 4495 sq ft), large windows, and rich hardwood floors. The beautifully updated kitchen features high-end finishes, perfect for entertaining. The spacious primary suite includes a walk-in closet and spa-like ensuite with dual showers. Renovations include new electrical, plumbing, windows, and in-floor heating in the kitchen, Ensuite and Craft room in the Basement.. Set on a massive 16,000 sq ft lot, enjoy a 3/4 car drive-through tandem garage, hot tub deck, potting shed/greenhouse with rainwater system, and storage sheds. Honestly too much that can't be descibed, must be seen! While nearby roads bring some bustle, the space, style, and privacy here make this a rare urban retreat! Come on Home!

Built in 1968

Essential Information

MLS® #	E4447458
Price	\$858,800
Bedrooms	3
Bathrooms	3.00
Full Baths	3



Square Footage	2,264
Acres	0.00
Year Built	1968
Type	Single Family
Sub-Type	Detached Single Family
Style	Bungalow
Status	Active

Community Information

Address	16 Quesnell Crescent
Area	Edmonton
Subdivision	Quesnell Heights
City	Edmonton
County	ALBERTA
Province	AB
Postal Code	T5R 5N9

Amenities

Amenities	Deck, Greenhouse, Hot Tub, No Animal Home, No Smoking Home
Parking Spaces	6
Parking	Front/Rear Drive Access, Over Sized, Tandem, Triple Garage Attached, See Remarks

Interior

Interior Features	ensuite bathroom
Appliances	Dishwasher-Built-In, Dryer, Freezer, Garage Opener, Hood Fan, Refrigerator, Storage Shed, Stove-Gas, Vacuum System Attachments, Vacuum Systems, Washer, Window Coverings, Hot Tub
Heating	Forced Air-1, In Floor Heat System, Natural Gas
Fireplace	Yes
Fireplaces	Glass Door, Stone Facing
Stories	2
Has Basement	Yes
Basement	Full, Finished

Exterior

Exterior	Wood, Stone, Vinyl
Exterior Features	Fenced, Fruit Trees/Shrubs, Landscaped, Low Maintenance Landscape, No Back Lane, Private Setting, Schools, Treed Lot, See Remarks

Roof	Asphalt Shingles
Construction	Wood, Stone, Vinyl
Foundation	Concrete Perimeter

Additional Information

Date Listed	July 12th, 2025
Days on Market	1
Zoning	Zone 22

DATA IS DEEMED RELIABLE BUT IS NOT GUARANTEED ACCURATE BY THE REALTORS® ASSOCIATION OF EDMONTON. COPYRIGHT 2025 BY THE REALTORS® ASSOCIATION OF EDMONTON. ALL RIGHTS RESERVED.Trademarks are owned or controlled by the Canadian Real Estate Association (CREA) and identify real estate professionals who are members of CREA (REALTOR®, REALTORS®) and/or the quality of services they provide (MLS®, Multiple Listing Service®)

Listing information last updated on July 13th, 2025 at 4:32am MDT