

## \$204,900 - 9359 172 Street, Edmonton

MLS® #E4447190

**\$204,900**

2 Bedroom, 1.00 Bathroom, 1,152 sqft

Condo / Townhouse on 0.00 Acres

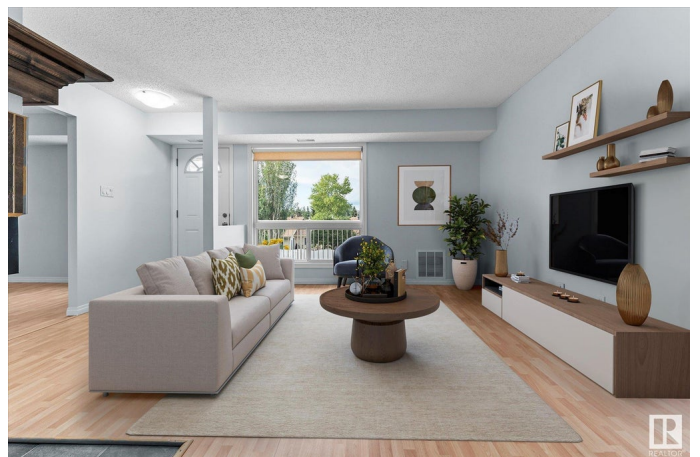
Summerlea, Edmonton, AB

Welcome Home! We are thrilled to present this light and airy 2-bedroom carriage home, which offers incredible flexibility to suit your needs. Originally a three-bedroom unit, it can easily be converted back to a third bedroom or maintained as a spacious office, providing versatile living options. As a corner unit, this home boasts an abundance of large windows that fill the space with natural light, creating a bright and expansive atmosphere. You'll appreciate the generously sized bedrooms, complete with ample walk-in closets. The kitchen features a huge pantry room, and the dream laundry area adds to the home's practical appeal, making it a truly perfect fit. Its prime location provides convenient access to a wide array of amenities and shopping, making this a truly desirable place to live. This property offers an excellent opportunity for a starter home, combining comfort, convenience, and adaptability. Some photos are virtually staged.

Built in 1980

### Essential Information

MLS® #	E4447190
Price	\$204,900
Bedrooms	2
Bathrooms	1.00



Full Baths	1
Square Footage	1,152
Acres	0.00
Year Built	1980
Type	Condo / Townhouse
Sub-Type	Carriage
Style	Bungalow
Status	Active

### Community Information

Address	9359 172 Street
Area	Edmonton
Subdivision	Summerlea
City	Edmonton
County	ALBERTA
Province	AB
Postal Code	T5T 5R6

### Amenities

Amenities	Deck, Storage-In-Suite
Parking Spaces	1
Parking	Stall

### Interior

Appliances	Dishwasher-Built-In, Dryer, Hood Fan, Oven-Microwave, Refrigerator, Stove-Electric, Washer, Window Coverings
Heating	Forced Air-1, Natural Gas
Fireplace	Yes
Fireplaces	Corner, Tile Surround
Stories	1
Has Basement	Yes
Basement	None, No Basement

### Exterior

Exterior	Wood, Stucco, Vinyl
Exterior Features	Shopping Nearby
Roof	Asphalt Shingles
Construction	Wood, Stucco, Vinyl
Foundation	Concrete Perimeter

**Additional Information**

Date Listed	July 9th, 2025
Days on Market	4
Zoning	Zone 20
Condo Fee	\$363

DATA IS DEEMED RELIABLE BUT IS NOT GUARANTEED ACCURATE BY THE REALTORS® ASSOCIATION OF EDMONTON. COPYRIGHT 2025 BY THE REALTORS® ASSOCIATION OF EDMONTON. ALL RIGHTS RESERVED.Trademarks are owned or controlled by the Canadian Real Estate Association (CREA) and identify real estate professionals who are members of CREA (REALTOR®, REALTORS®) and/or the quality of services they provide (MLS®, Multiple Listing Service®)

Listing information last updated on July 13th, 2025 at 5:02am MDT