

# \$200,000 - 615 Hermitage Road, Edmonton

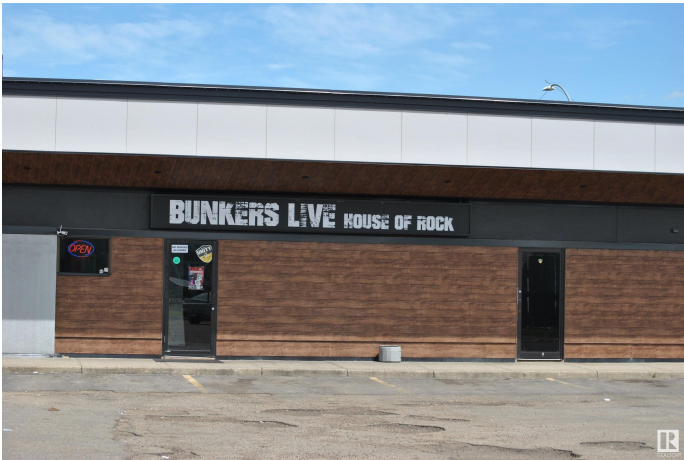
MLS® #E4447033

**\$200,000**

0 Bedroom, 0.00 Bathroom,  
Business on 0.00 Acres

Homesteader, Edmonton, AB

Turnkey Restaurant & Sports Pub for Sale – North Edmonton An exceptional opportunity to own a well-established and thriving restaurant and sports pub in North Edmonton. Operating successfully since 2009, this popular venue is known for its lively atmosphere, loyal clientele, and diverse entertainment offerings. Located in a high-traffic strip mall with updated exterior renovations completed just two years ago, the property offers a spacious and modern interior with seating for 150 guests, plus a seasonal patio accommodating 20 more. This fully licensed venue features: Live entertainment and pool league nights Dance floor and elevated stage for DJs or performers Modern tables, updated seating, and stylish décor ATM machine, 3 VLTs, 2 pool tables 11 strategically placed TVs for sports viewing Enhanced DJ booth with upgraded sound system and lighting Popular jukebox system to keep the energy going This business is ready for a new owner to step in and continue its success—or take it to the next level.



## Essential Information

MLS® #	E4447033
Price	\$200,000
Bathrooms	0.00
Acres	0.00

Type	Business
Status	Active

### Community Information

Address	615 Hermitage Road
Area	Edmonton
Subdivision	Homesteader
City	Edmonton
County	ALBERTA
Province	AB
Postal Code	T5A 4M2

### Additional Information

Date Listed	July 9th, 2025
Days on Market	49
Zoning	Zone 35

DATA IS DEEMED RELIABLE BUT IS NOT GUARANTEED ACCURATE BY THE REALTORS® ASSOCIATION OF EDMONTON. COPYRIGHT 2025 BY THE REALTORS® ASSOCIATION OF EDMONTON. ALL RIGHTS RESERVED. Trademarks are owned or controlled by the Canadian Real Estate Association (CREA) and identify real estate professionals who are members of CREA (REALTOR®, REALTORS®) and/or the quality of services they provide (MLS®, Multiple Listing Service®)

Listing information last updated on August 27th, 2025 at 6:17pm MDT