

# \$619,900 - 7733 Ellesmere Lane, Sherwood Park

MLS® #E4445673

**\$619,900**

4 Bedroom, 3.50 Bathroom, 1,622 sqft

Single Family on 0.00 Acres

Emerald Hills, Sherwood Park, AB

Beautiful 2-storey in desirable Emerald Hills with a FULLY FINISHED BASEMENT! The main floor offers a bright, open layout perfect for entertaining. The kitchen features ample cabinet/counter space, raised eating bar & UPGRADED APPLIANCES. Upgraded vinyl FLOORING on the main floor and in all the washrooms. Dining area overlooks the PROFESSIONALLY LANDSCAPED YARD through patio doors. Renovated MAIN-FLOOR LAUNDRY & 2pc bath complete the main. Upstairs, the MASSIVE primary suite boasts a huge walk-in closet & full ensuite. Two more bedrooms with BUILT-IN CLOSET ORGANIZERS & a 4pc bath finish the level. The basement is PROFESSIONALLY DEVELOPED with a 4th bedroom, full bath with TILED SHOWER & large rec room. Fresh interior paint & OVERSIZED GARAGE for added convenience. Stay cool with A/C! Backyard is an OASISâ€”huge deck with privacy wall/pergola, HOT TUB, & custom shed. This home has it ALL!

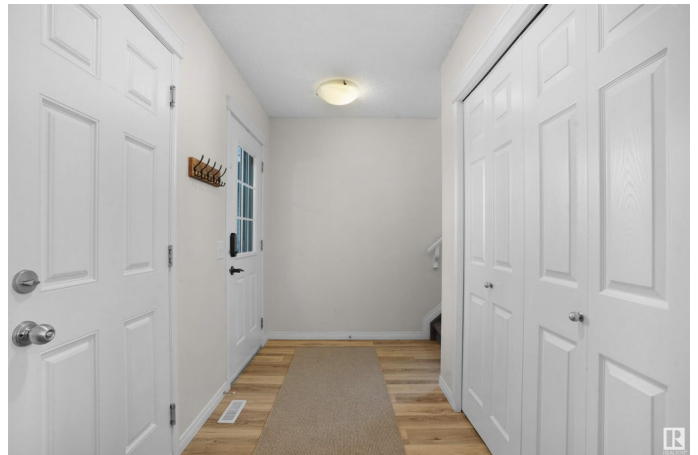
Built in 2013

## Essential Information

MLS® # E4445673

Price \$619,900

Bedrooms 4



Bathrooms	3.50
Full Baths	3
Half Baths	1
Square Footage	1,622
Acres	0.00
Year Built	2013
Type	Single Family
Sub-Type	Detached Single Family
Style	2 Storey
Status	Active

### Community Information

Address	7733 Ellesmere Lane
Area	Sherwood Park
Subdivision	Emerald Hills
City	Sherwood Park
County	ALBERTA
Province	AB
Postal Code	T8H 0P7

### Amenities

Amenities	Air Conditioner, Closet Organizers, Deck, Gazebo, Hot Tub, Parking-Extra, See Remarks
Parking Spaces	4
Parking	Double Garage Attached

### Interior

Interior Features	ensuite bathroom
Appliances	Dishwasher-Built-In, Dryer, Microwave Hood Fan, Refrigerator, Storage Shed, Stove-Electric, Washer, Window Coverings, Hot Tub
Heating	Forced Air-1, Natural Gas
Fireplace	Yes
Fireplaces	Glass Door, Heatilator/Fan, Mantel
Stories	2
Has Basement	Yes
Basement	Full, Finished

### Exterior

Exterior	Wood, Stone, Vinyl
----------	--------------------

Exterior Features	Fenced, Flat Site, Schools, Shopping Nearby, See Remarks
Roof	Asphalt Shingles
Construction	Wood, Stone, Vinyl
Foundation	Concrete Perimeter

**Additional Information**

Date Listed	July 3rd, 2025
Days on Market	10
Zoning	Zone 25

DATA IS DEEMED RELIABLE BUT IS NOT GUARANTEED ACCURATE BY THE REALTORS® ASSOCIATION OF EDMONTON. COPYRIGHT 2025 BY THE REALTORS® ASSOCIATION OF EDMONTON. ALL RIGHTS RESERVED.Trademarks are owned or controlled by the Canadian Real Estate Association (CREA) and identify real estate professionals who are members of CREA (REALTOR®, REALTORS®) and/or the quality of services they provide (MLS®, Multiple Listing Service®)

Listing information last updated on July 13th, 2025 at 3:32pm MDT