

\$329,900 - 35 380 Silver Berry Road, Edmonton

MLS® #E4445421

\$329,900

3 Bedroom, 1.50 Bathroom, 1,232 sqft

Condo / Townhouse on 0.00 Acres

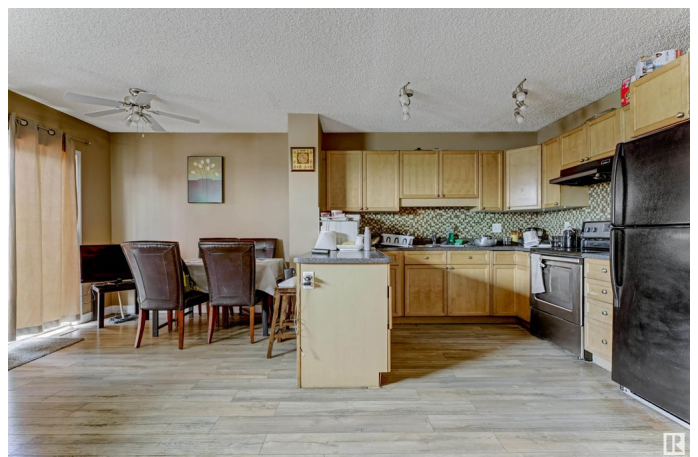
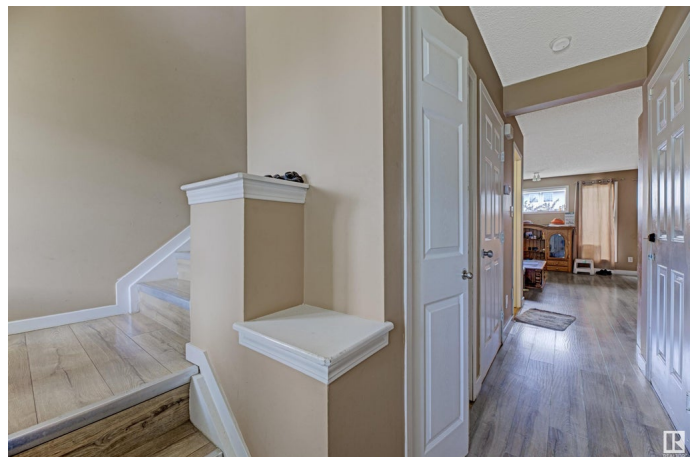
Silver Berry, Edmonton, AB

Welcome to this beautiful two-story townhouse located in Silverberry Pointe. This home boasts an attached single-car garage and an abundance of natural light throughout. The main floor features a spacious open-concept kitchen, living, and dining area—perfect for entertaining and comfortable family living. Upstairs, you’ll find three generously sized bedrooms along with a full bathroom. Additionally, the partially finished basement offers extra living or recreational space. The property is beautifully landscaped and fenced, providing both privacy and curb appeal.

Built in 2007

Essential Information

MLS® #	E4445421
Price	\$329,900
Bedrooms	3
Bathrooms	1.50
Full Baths	1
Half Baths	1
Square Footage	1,232
Acres	0.00
Year Built	2007
Type	Condo / Townhouse
Sub-Type	Townhouse
Style	2 Storey



Status	Active
--------	--------

Community Information

Address	35 380 Silver Berry Road
Area	Edmonton
Subdivision	Silver Berry
City	Edmonton
County	ALBERTA
Province	AB
Postal Code	T6T 0G4

Amenities

Amenities	Deck
Parking	Single Garage Attached

Interior

Appliances	Dishwasher-Built-In, Dryer, Hood Fan, Refrigerator, Stove-Electric, Washer
Heating	Forced Air-1, Natural Gas
Stories	2
Has Basement	Yes
Basement	Full, Partially Finished

Exterior

Exterior	Wood, Vinyl
Exterior Features	Fenced, Landscaped, Playground Nearby, Public Transportation, Shopping Nearby
Roof	Asphalt Shingles
Construction	Wood, Vinyl
Foundation	Concrete Perimeter

Additional Information

Date Listed	July 1st, 2025
Days on Market	12
Zoning	Zone 30
Condo Fee	\$225

DATA IS DEEMED RELIABLE BUT IS NOT GUARANTEED ACCURATE BY THE REALTORS® ASSOCIATION OF EDMONTON. COPYRIGHT 2025 BY THE REALTORS® ASSOCIATION OF EDMONTON. ALL RIGHTS RESERVED. Trademarks are owned or controlled by the Canadian Real Estate Association (CREA) and identify real estate professionals who are members of CREA (REALTOR®, REALTORS®) and/or the quality of services they

provide (MLS®®, Multiple Listing Service®®)
Listing information last updated on July 13th, 2025 at 6:47am MDT