

Courtesy Of Christina A Reid Of Century 21 Leading

## \$875,000 - 16 7121 May Crescent, Edmonton

MLS® #E4444190

**\$875,000**

3 Bedroom, 3.00 Bathroom, 2,580 sqft

Condo / Townhouse on 0.00 Acres

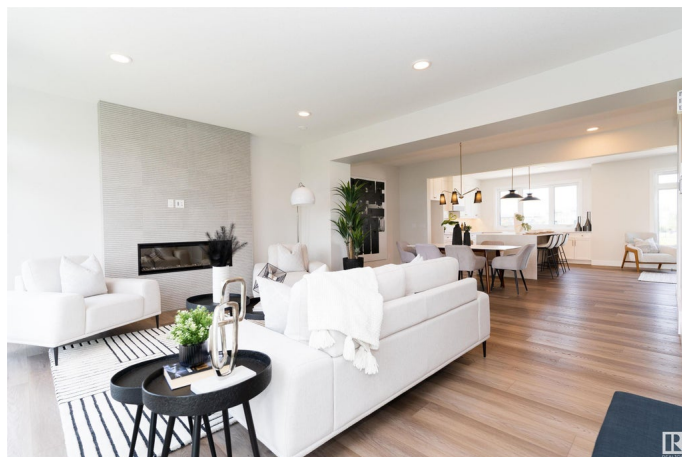
Magrath Heights, Edmonton, AB

Live in luxury in one of Edmonton's most desirable communities. The Emerald is located in Ekos Point, a community that rests at the edge of Larch Sanctuary and the Whitemud Creek. Experience elevated living in this exceptional executive townhome, proudly Energuide and Built Green Certified for superior energy efficiency and sustainable design. Enjoy 9' ceilings on all floors, air conditioning, and a lower level flex room. The kitchen is beautifully appointed with quartz countertops throughout, undermount sinks, soft-close cabinets and drawers. A true retreat the spacious primary bedroom features a luxurious ensuite with dual sinks, a standing glass shower, and a generous walk-in closet. Step outside to your private balcony with a BBQ gas line or relax in the fully landscaped, private fenced yard backing onto a scenic ravine. Additional features include an electric linear fireplace, smart home package, and double garage. Start living in Ekos Point!

Built in 2023

### Essential Information

MLS® #	E4444190
Price	\$875,000
Bedrooms	3
Bathrooms	3.00



Full Baths	2
Half Baths	2
Square Footage	2,580
Acres	0.00
Year Built	2023
Type	Condo / Townhouse
Sub-Type	Townhouse
Style	3 Storey
Status	Active

### Community Information

Address	16 7121 May Crescent
Area	Edmonton
Subdivision	Magrath Heights
City	Edmonton
County	ALBERTA
Province	AB
Postal Code	T6R 0X2

### Amenities

Amenities	Air Conditioner, Carbon Monoxide Detectors, Ceiling 9 ft., Deck, Hot Water Tankless, Parking-Visitor, Smart/Program. Thermostat, Natural Gas BBQ Hookup
Parking	Double Garage Attached

### Interior

Interior Features	ensuite bathroom
Appliances	Air Conditioning-Central, Dishwasher-Built-In, Garage Control, Garage Opener, Refrigerator, Stacked Washer/Dryer, Stove-Electric
Heating	Forced Air-1, Natural Gas
Fireplace	Yes
Fireplaces	Insert
Stories	3
Has Basement	Yes
Basement	None, Partially Finished

### Exterior

Exterior	Prefab, Stucco, Hardie Board Siding
Exterior Features	Airport Nearby, Backs Onto Park/Trees, Fenced, Golf Nearby,

Landscaped, Park/Reserve, Playground Nearby, Public Transportation, Schools, Shopping Nearby

Roof	Asphalt Shingles
Construction	Prefab, Stucco, Hardie Board Siding
Foundation	Slab

### School Information

Elementary	NELLIE CARLSON K-9
Middle	Archbishop Joseph MacNeil
High	LILLIAN OSBORNE

### Additional Information

Date Listed	June 25th, 2025
Days on Market	27
Zoning	Zone 14
HOA Fees	250
HOA Fees Freq.	Annually
Condo Fee	\$172

DATA IS DEEMED RELIABLE BUT IS NOT GUARANTEED ACCURATE BY THE REALTORS® ASSOCIATION OF EDMONTON. COPYRIGHT 2025 BY THE REALTORS® ASSOCIATION OF EDMONTON. ALL RIGHTS RESERVED. Trademarks are owned or controlled by the Canadian Real Estate Association (CREA) and identify real estate professionals who are members of CREA (REALTOR®, REALTORS®) and/or the quality of services they provide (MLS®, Multiple Listing Service®)

Listing information last updated on July 21st, 2025 at 9:47pm MDT