

\$650,000 - 10 Stoneshire Manor, Spruce Grove

MLS® #E4443526

\$650,000

5 Bedroom, 4.00 Bathroom, 2,172 sqft

Single Family on 0.00 Acres

Stoneshire, Spruce Grove, AB

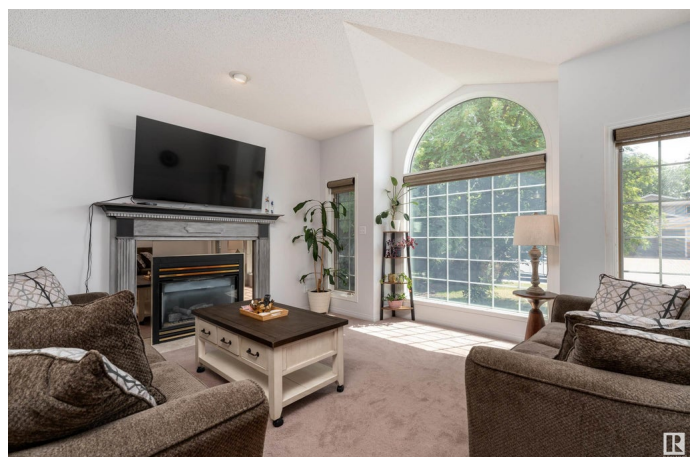
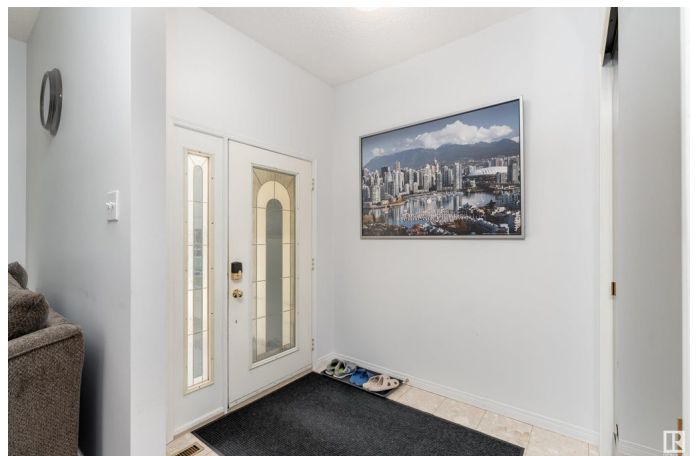
Unique 5-bedroom, 4-bathroom bungalow in the highly sought-after community of Stoneshire. What sets this sprawling bungalow apart? It's rare upper-level loft suite featuring its own bedroom, 3-piece ensuite, and private retreatâ€”ideal for a teenager, guests, or anyone craving a little extra privacy.

The main floor impresses with hardwood flooring, 2 cozy gas fireplaces, formal dining, and a spa-like primary ensuite. You'll love the slate appliances, high ceilings with elegant crown moulding, and open layout perfect for entertaining. Just wait until you see the expansive finished basement and oversized heated garage. Enjoy outdoor living on the covered rear deck, overlooking a large, private backyardâ€”complete with your very own hot tub for year-round enjoyment! Nestled in a quiet cul-de sac in the heart of Spruce Grove, you're just steps from The Links Golf Course, walking trails, schools, major amenities, and commuter routes.

Built in 1993

Essential Information

| | |
|-----------|-----------|
| MLS® # | E4443526 |
| Price | \$650,000 |
| Bedrooms | 5 |
| Bathrooms | 4.00 |



| | |
|----------------|------------------------|
| Full Baths | 4 |
| Square Footage | 2,172 |
| Acres | 0.00 |
| Year Built | 1993 |
| Type | Single Family |
| Sub-Type | Detached Single Family |
| Style | Bungalow |
| Status | Active |

Community Information

| | |
|-------------|---------------------|
| Address | 10 Stoneshire Manor |
| Area | Spruce Grove |
| Subdivision | Stoneshire |
| City | Spruce Grove |
| County | ALBERTA |
| Province | AB |
| Postal Code | T7X 3E3 |

Amenities

| | |
|-----------|--|
| Amenities | Deck, Hot Tub |
| Parking | Double Garage Attached, Front Drive Access |

Interior

| | |
|-------------------|--|
| Interior Features | ensuite bathroom |
| Appliances | Dishwasher-Built-In, Dryer, Garage Control, Garage Opener, Microwave Hood Fan, Refrigerator, Stove-Electric, Vacuum System Attachments, Vacuum Systems, Washer, Garage Heater, Hot Tub |
| Heating | Forced Air-2, Natural Gas |
| Fireplace | Yes |
| Fireplaces | Stone Facing |
| Stories | 3 |
| Has Basement | Yes |
| Basement | Full, Finished |

Exterior

| | |
|-------------------|---|
| Exterior | Wood, Stucco |
| Exterior Features | Cul-De-Sac, Fenced, Flat Site, Golf Nearby, Playground Nearby, Schools, Shopping Nearby |
| Roof | Cedar Shakes |

| | |
|--------------|--------------------|
| Construction | Wood, Stucco |
| Foundation | Concrete Perimeter |

School Information

| | |
|------------|-------------------------|
| Elementary | Brookwood School |
| Middle | Woodhaven Middle School |
| High | Spruce Grove Composite |

Additional Information

| | |
|----------------|-----------------|
| Date Listed | June 20th, 2025 |
| Days on Market | 79 |
| Zoning | Zone 91 |

DATA IS DEEMED RELIABLE BUT IS NOT GUARANTEED ACCURATE BY THE REALTORS® ASSOCIATION OF EDMONTON. COPYRIGHT 2025 BY THE REALTORS® ASSOCIATION OF EDMONTON. ALL RIGHTS RESERVED.Trademarks are owned or controlled by the Canadian Real Estate Association (CREA) and identify real estate professionals who are members of CREA (REALTOR®, REALTORS®) and/or the quality of services they provide (MLS®, Multiple Listing Service®)

Listing information last updated on September 7th, 2025 at 12:17pm MDT