

Courtesy Of Sherri L Herman Of One Percent Realty

\$575,000 - 204 11710 87 Avenue, Edmonton

MLS® #E4443325

\$575,000

2 Bedroom, 2.50 Bathroom, 1,173 sqft

Condo / Townhouse on 0.00 Acres

Windsor Park (Edmonton), Edmonton, AB

Discover luxury living at The Bentley â€” an exclusive new condominium in prestigious Windsor Park, just steps from the University of Alberta and the Edmonton River Valley. These bright 2-bedroom, 2.5-bathroom residences offer exceptional concrete and steel construction, a timeless brick and stone exterior, and premium finishes throughout. Open concept dining, kitchen and living room features: sleek cabinetry, work station sink with garburator, quartz countertops/backsplash, stainless steel appliances, triple-pane windows, Laminate floors, and a stylish linear fireplace. Large primary with walk-in closet with built-ins, spa-inspired en-suite features a jetted tub/glass shower. The second bedroom features 2 closets and an ensuite with a tub/shower combo. Other bonus's are the 1/2 bath for guests with a closet, laundry room with extra cabinets, and one underground parking stall with storage. Come live in the most perfect pocket of Edmonton.

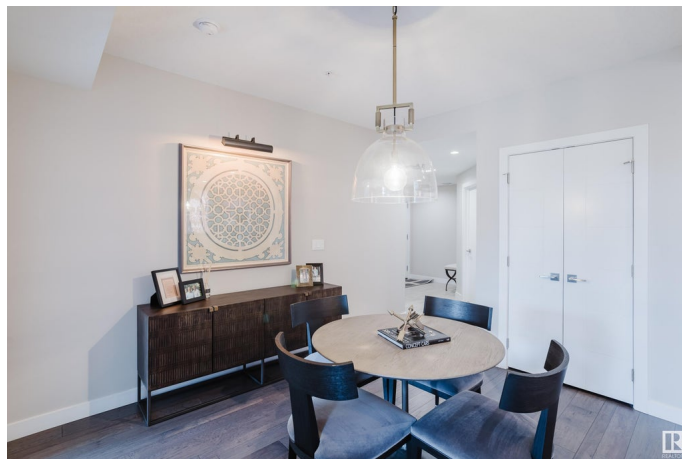
Built in 2016

Essential Information

MLS® # E4443325

Price \$575,000

Bedrooms 2



Bathrooms	2.50
Full Baths	2
Half Baths	1
Square Footage	1,173
Acres	0.00
Year Built	2016
Type	Condo / Townhouse
Sub-Type	Lowrise Apartment
Style	Single Level Apartment
Status	Active

Community Information

Address	204 11710 87 Avenue
Area	Edmonton
Subdivision	Windsor Park (Edmonton)
City	Edmonton
County	ALBERTA
Province	AB
Postal Code	T6G 0Y3

Amenities

Amenities	Air Conditioner, No Smoking Home
Parking Spaces	1
Parking	Underground

Interior

Interior Features	ensuite bathroom
Appliances	Dishwasher-Built-In, Dryer, Microwave Hood Fan, Refrigerator, Stove-Electric, Washer, Window Coverings, See Remarks
Heating	Heat Pump, Natural Gas
Fireplace	Yes
Fireplaces	Wall Mount
# of Stories	4
Stories	1
Has Basement	Yes
Basement	None, No Basement

Exterior

Exterior	Steel, Brick, Stone
----------	---------------------

Exterior Features	Low Maintenance Landscape
Roof	SBS Roofing System
Construction	Steel, Brick, Stone
Foundation	Concrete Perimeter

Additional Information

Date Listed	June 19th, 2025
Days on Market	9
Zoning	Zone 15
Condo Fee	\$655

DATA IS DEEMED RELIABLE BUT IS NOT GUARANTEED ACCURATE BY THE REALTORS® ASSOCIATION OF EDMONTON. COPYRIGHT 2025 BY THE REALTORS® ASSOCIATION OF EDMONTON. ALL RIGHTS RESERVED.Trademarks are owned or controlled by the Canadian Real Estate Association (CREA) and identify real estate professionals who are members of CREA (REALTOR®, REALTORS®) and/or the quality of services they provide (MLS®, Multiple Listing Service®)

Listing information last updated on June 28th, 2025 at 2:47am MDT