

\$199,000 - 7215 7327 South Terwillegar Drive, Edmonton

MLS® #E4443180

\$199,000

2 Bedroom, 2.00 Bathroom, 853 sqft
Condo / Townhouse on 0.00 Acres

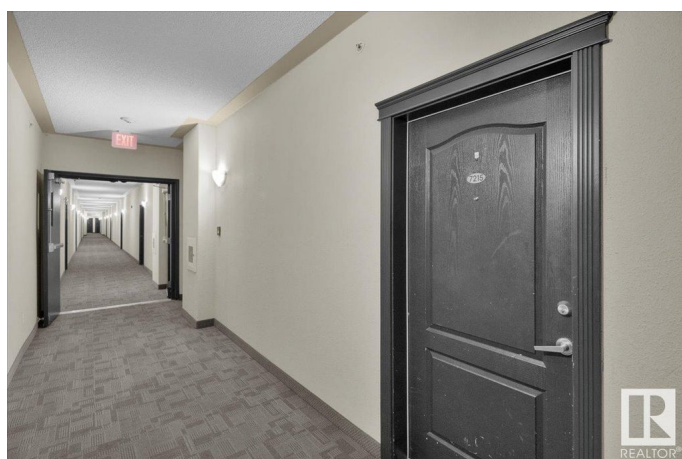
South Terwillegar, Edmonton, AB

Welcome to this beautifully maintained 2-bedroom, 2-bath condo offering a bright & functional layout with stylish finishes & underground heated parking. Perfect for first-time buyers, downsizers, or investors, this east-facing unit provides peaceful views from both the bedrooms & balcony. Enjoy a modern open floor plan with large windows that flood the space with natural light. The kitchen features stainless steel appliances, ample cabinetry, & a rare walk-in pantry. The primary bedroom includes a walk-through closet & private 3-piece ensuite, while the second bedroom is conveniently located next to a full 4-piece bath. Recently painted with brand-new laminate flooring throughout, this home is truly move-in ready. Located in one of the most desirable buildings in the city—steps from Freson Bros, Shoppers, restaurants, parks, top-rated schools, & public transit, with easy access to Anthony Henday. Don't miss this opportunity to live in style & comfort!

Built in 2007

Essential Information

MLS® #	E4443180
Price	\$199,000
Bedrooms	2



Bathrooms	2.00
Full Baths	2
Square Footage	853
Acres	0.00
Year Built	2007
Type	Condo / Townhouse
Sub-Type	Lowrise Apartment
Style	Single Level Apartment
Status	Active

Community Information

Address	7215 7327 South Terwillegar Drive
Area	Edmonton
Subdivision	South Terwillegar
City	Edmonton
County	ALBERTA
Province	AB
Postal Code	T6R 0L8

Amenities

Amenities	Deck, Intercom, Parking-Visitor, Storage-In-Suite
Parking	Heated, Parkade, Stall, Underground

Interior

Interior Features	ensuite bathroom
Appliances	Dishwasher-Built-In, Hood Fan, Oven-Microwave, Refrigerator, Stacked Washer/Dryer, Stove-Electric, Window Coverings
Heating	Baseboard, Natural Gas
# of Stories	4
Stories	1
Has Basement	Yes
Basement	None, No Basement

Exterior

Exterior	Wood, Stone, Vinyl
Exterior Features	Flat Site, Golf Nearby, Landscaped, Park/Reserve, Playground Nearby, Public Transportation, Schools, Shopping Nearby
Roof	Asphalt Shingles
Construction	Wood, Stone, Vinyl

Foundation Concrete Perimeter

School Information

Elementary Esther Starkman
Middle Esther Starkman
High Lillian Osborne

Additional Information

Date Listed June 17th, 2025
Days on Market 11
Zoning Zone 14
Condo Fee \$467

DATA IS DEEMED RELIABLE BUT IS NOT GUARANTEED ACCURATE BY THE REALTORS® ASSOCIATION OF EDMONTON. COPYRIGHT 2025 BY THE REALTORS® ASSOCIATION OF EDMONTON. ALL RIGHTS RESERVED.Trademarks are owned or controlled by the Canadian Real Estate Association (CREA) and identify real estate professionals who are members of CREA (REALTOR®, REALTORS®) and/or the quality of services they provide (MLS®, Multiple Listing Service®)
Listing information last updated on June 28th, 2025 at 12:32am MDT