

\$225,000 - 114 3357 16a Avenue, Edmonton

MLS® #E4443101

\$225,000

2 Bedroom, 2.00 Bathroom, 842 sqft

Condo / Townhouse on 0.00 Acres

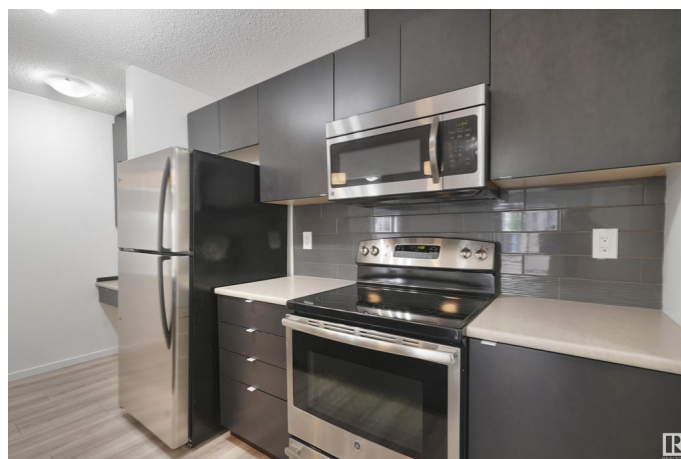
Laurel, Edmonton, AB

Freshly updated and move-in ready in Laurel. Visit the REALTOR®'s website for more details. This main floor 2 bed 2 bath corner unit features all new flooring and paint throughout, giving the home a clean, modern feel. The open layout offers a functional kitchen with great counter space, a bright living area, and access to your private ground-level patio. Both bedrooms are thoughtfully separated for privacy, including a spacious primary suite with a walkthrough closet leading to a 4-piece ensuite. You'll also love the convenience of in-suite laundry and 2 underground titled parking stalls, making this a practical and stylish choice for first-time buyers, downsizers, or investors. Located close to schools, shopping, transit, and major roadways, this updated condo in Laurel offers exceptional value in a growing community.

Built in 2013

Essential Information

MLS® #	E4443101
Price	\$225,000
Bedrooms	2
Bathrooms	2.00
Full Baths	2
Square Footage	842
Acres	0.00



Year Built	2013
Type	Condo / Townhouse
Sub-Type	Lowrise Apartment
Style	Single Level Apartment
Status	Active

Community Information

Address	114 3357 16a Avenue
Area	Edmonton
Subdivision	Laurel
City	Edmonton
County	ALBERTA
Province	AB
Postal Code	T6T 0V4

Amenities

Amenities	Closet Organizers, Parking-Visitor
Parking Spaces	2
Parking	Parkade, Underground

Interior

Interior Features	ensuite bathroom
Appliances	Dishwasher-Built-In, Dryer, Microwave Hood Fan, Refrigerator, Stove-Electric, Washer, Curtains and Blinds
Heating	Baseboard, Natural Gas
# of Stories	4
Stories	1
Has Basement	Yes
Basement	None, No Basement

Exterior

Exterior	Wood, Stone, Vinyl
Exterior Features	Picnic Area, Playground Nearby, Public Transportation, Schools, Shopping Nearby
Roof	Asphalt Shingles
Construction	Wood, Stone, Vinyl
Foundation	Concrete Perimeter

School Information

Elementary	Svend Hansen School
Middle	Svend Hansen School
High	Elder Dr. Francis Whiskey

Additional Information

Date Listed	June 19th, 2025
Days on Market	10
Zoning	Zone 30
Condo Fee	\$533

DATA IS DEEMED RELIABLE BUT IS NOT GUARANTEED ACCURATE BY THE REALTORS® ASSOCIATION OF EDMONTON. COPYRIGHT 2025 BY THE REALTORS® ASSOCIATION OF EDMONTON. ALL RIGHTS RESERVED. Trademarks are owned or controlled by the Canadian Real Estate Association (CREA) and identify real estate professionals who are members of CREA (REALTOR®, REALTORS®) and/or the quality of services they provide (MLS®, Multiple Listing Service®)

Listing information last updated on June 29th, 2025 at 7:47pm MDT