

\$155,000 - 316 10118 106 Ave, Edmonton

MLS® #E4442720

\$155,000

1 Bedroom, 1.00 Bathroom, 587 sqft

Condo / Townhouse on 0.00 Acres

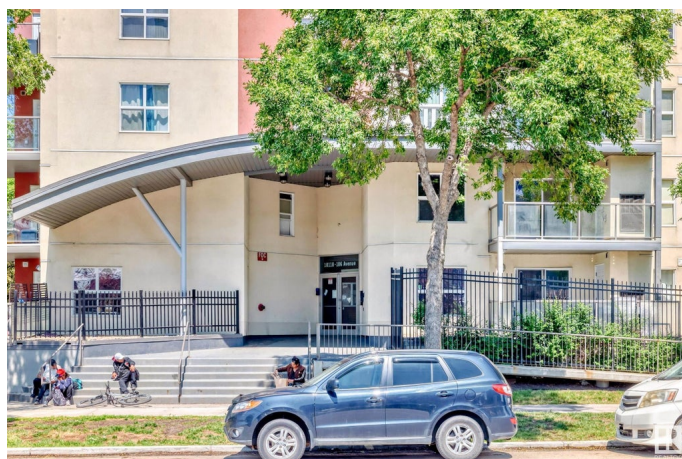
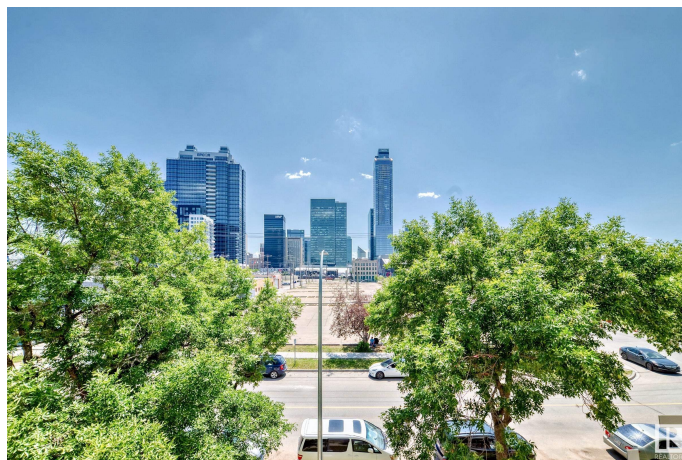
Central Mcdougall, Edmonton, AB

Discover this 587 sq ft, 1-bed, 1-bath condo in the heart of Edmonton's vibrant Ice District, a proven successful Airbnb or your perfect urban home! Steps from Rogers Place, Brew and Bloom, Lingnam, and MacEwan University, this prime location offers a stunning downtown view and unbeatable access to the action. Includes a heated underground parking stall and is within walking distance to the LRT, Jasper Avenue, and River Valley trails. Located in a vibrant neighborhood with top dining, entertainment, and local events. Whether you're hosting guests for a game night at Rogers Place or seeking a chic downtown retreat, this turnkey property is ready to shine.

Built in 2007

Essential Information

MLS® #	E4442720
Price	\$155,000
Bedrooms	1
Bathrooms	1.00
Full Baths	1
Square Footage	587
Acres	0.00
Year Built	2007
Type	Condo / Townhouse



Sub-Type	Lowrise Apartment
Style	Single Level Apartment
Status	Active

Community Information

Address	316 10118 106 Ave
Area	Edmonton
Subdivision	Central Mcdougall
City	Edmonton
County	ALBERTA
Province	AB
Postal Code	T5T 2T6

Amenities

Amenities	On Street Parking, No Animal Home, No Smoking Home, Parking-Visitor, Secured Parking, Security Door
Parking	Underground

Interior

Appliances	Dishwasher-Built-In, Dryer, Refrigerator, Stove-Electric, Washer, Window Coverings
Heating	Forced Air-1, Natural Gas
# of Stories	5
Stories	5
Has Basement	Yes
Basement	None, No Basement

Exterior

Exterior	Wood, Stucco
Exterior Features	Public Transportation, Shopping Nearby, View City, View Downtown
Roof	Tar & Gravel
Construction	Wood, Stucco
Foundation	Concrete Perimeter

Additional Information

Date Listed	June 17th, 2025
Days on Market	84
Zoning	Zone 08
Condo Fee	\$392

DATA IS DEEMED RELIABLE BUT IS NOT GUARANTEED ACCURATE BY THE REALTORS® ASSOCIATION OF EDMONTON. COPYRIGHT 2025 BY THE REALTORS® ASSOCIATION OF EDMONTON. ALL RIGHTS RESERVED.Trademarks are owned or controlled by the Canadian Real Estate Association (CREA) and identify real estate professionals who are members of CREA (REALTOR®, REALTORS®) and/or the quality of services they provide (MLS®, Multiple Listing Service®)

Listing information last updated on September 9th, 2025 at 8:02pm MDT