

\$285,000 - 1144 Adamson Drive, Edmonton

MLS® #E4442476

\$285,000

2 Bedroom, 2.00 Bathroom, 787 sqft
Condo / Townhouse on 0.00 Acres

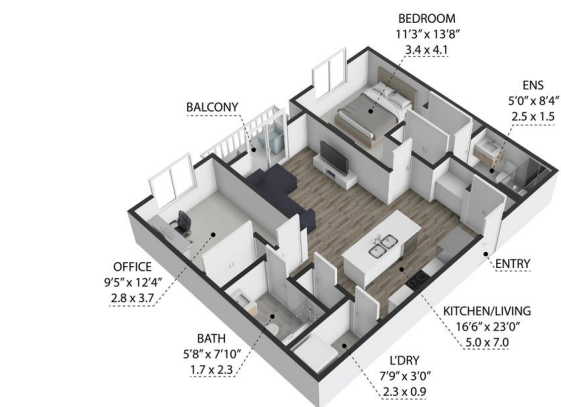
Allard, Edmonton, AB

Welcome to Elan Condominiums—ideally located next to a ravine and just minutes from restaurants, grocery stores, parks, and more. This well-maintained unit offers a bright open-concept layout with large glass doors leading to a balcony that overlooks the ravine. The kitchen is in excellent condition with modern white cabinetry, stainless steel appliances, a full-size pantry, and a large island with eat-up space. The primary bedroom includes a walk-through closet and a 3-piece ensuite with ceramic tile flooring. The second bedroom is located on the opposite side of the unit, perfect for a guest room or home office. Additional features include in-suite laundry, a built-in desk area, two titled parking stalls, and a storage cage. Recently professionally painted and cleaned—ready for quick possession. The building offers a fitness centre, social room, and secure entry system.

Built in 2014

Essential Information

MLS® #	E4442476
Price	\$285,000
Bedrooms	2
Bathrooms	2.00
Full Baths	2



1144 Adamson Drive SW, Edmonton, AB, T6W 2K7
TOTAL APPROX. FLOOR AREA 787 SQ FT - 65 SQ M
Measurements are approximate and should not be used for any purpose other than for general information only. This plan is for illustrative purposes only and should not be used as such by any prospective purchaser.

Square Footage	787
Acres	0.00
Year Built	2014
Type	Condo / Townhouse
Sub-Type	Lowrise Apartment
Style	Single Level Apartment
Status	Active

Community Information

Address	1144 Adamson Drive
Area	Edmonton
Subdivision	Allard
City	Edmonton
County	ALBERTA
Province	AB
Postal Code	T6W 2X7

Amenities

Amenities	Deck, Exercise Room, Social Rooms
Parking Spaces	2
Parking	Heated, Parkade, Underground

Interior

Interior Features	ensuite bathroom
Appliances	Dishwasher-Built-In, Dryer, Refrigerator, Stove-Electric, Washer
Heating	Baseboard, Natural Gas
# of Stories	4
Stories	1
Has Basement	Yes
Basement	None, No Basement

Exterior

Exterior	Wood, Brick, Stucco
Exterior Features	Schools, Shopping Nearby
Roof	Asphalt Shingles
Construction	Wood, Brick, Stucco
Foundation	Concrete Perimeter

Additional Information

Date Listed	June 13th, 2025
Days on Market	2
Zoning	Zone 55
Condo Fee	\$419

DATA IS DEEMED RELIABLE BUT IS NOT GUARANTEED ACCURATE BY THE REALTORS® ASSOCIATION OF EDMONTON. COPYRIGHT 2025 BY THE REALTORS® ASSOCIATION OF EDMONTON. ALL RIGHTS RESERVED. Trademarks are owned or controlled by the Canadian Real Estate Association (CREA) and identify real estate professionals who are members of CREA (REALTOR®, REALTORS®) and/or the quality of services they provide (MLS®, Multiple Listing Service®)

Listing information last updated on June 15th, 2025 at 7:32pm MDT