

\$429,900 - 24 Hamilton Court, Spruce Grove

MLS® #E4441971

\$429,900

3 Bedroom, 2.50 Bathroom, 1,556 sqft

Single Family on 0.00 Acres

Harvest Ridge, Spruce Grove, AB

Welcome to this beautifully maintained half duplex in a quiet cul-de-sac, set on a massive pie-shaped lot! With 3 bedrooms and 2.5 baths, this home offers the perfect blend of comfort, space, and style. Step into the bright and open main floor featuring soaring 17-ft ceilings in the living room, large windows, hardwood flooring, ceramic tile, and a corner gas fireplace. The kitchen showcases stainless steel appliances, and a functional layout ideal for everyday living and entertaining. Upstairs, youâ€™ll find convenient top-floor laundry, wrought iron railings, and a spacious primary suite with a 3-piece ensuite. The basement is 90% finished, offering additional versatile living space. Enjoy your huge, fully fenced yard complete with low-maintenance landscaping, deck, storage shed, childrenâ€™s play centre, and a fire pit areaâ€”perfect for entertaining outdoors. All of this just steps from walking trails, parks, schools, and all major amenities in Spruce Grove. This is a turn-key home in a fantastic location!

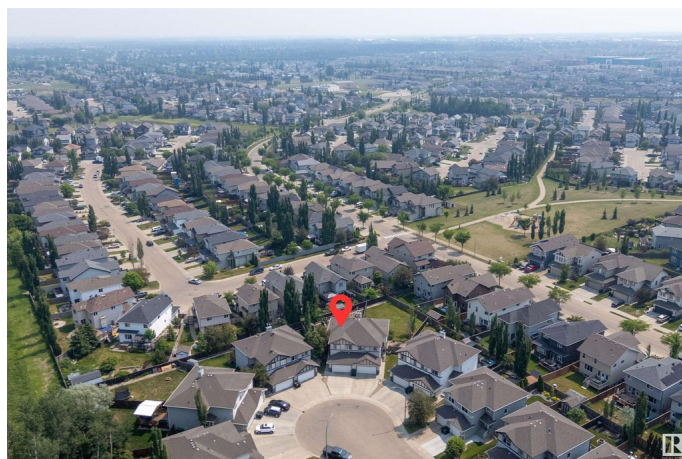
Built in 2010

Essential Information

MLS® # E4441971

Price \$429,900

Bedrooms 3



Bathrooms	2.50
Full Baths	2
Half Baths	1
Square Footage	1,556
Acres	0.00
Year Built	2010
Type	Single Family
Sub-Type	Half Duplex
Style	2 Storey
Status	Active

Community Information

Address	24 Hamilton Court
Area	Spruce Grove
Subdivision	Harvest Ridge
City	Spruce Grove
County	ALBERTA
Province	AB
Postal Code	T7X 0K4

Amenities

Amenities	Air Conditioner, Deck, Detectors Smoke, Vinyl Windows, HRV System
Parking	Double Garage Attached

Interior

Interior Features	ensuite bathroom
Appliances	Air Conditioning-Central, Dishwasher-Built-In, Dryer, Microwave Hood Fan, Refrigerator, Storage Shed, Stove-Electric, Washer, Curtains and Blinds
Heating	Forced Air-1, Natural Gas
Fireplace	Yes
Fireplaces	Mantel
Stories	3
Has Basement	Yes
Basement	Full, Partially Finished

Exterior

Exterior	Wood, Stone, Vinyl
Exterior Features	Cul-De-Sac, Fenced, Flat Site, Fruit Trees/Shrubs, Public

	Transportation, Schools, Shopping Nearby
Roof	Asphalt Shingles
Construction	Wood, Stone, Vinyl
Foundation	Concrete Perimeter

Additional Information

Date Listed	June 12th, 2025
Days on Market	5
Zoning	Zone 91

DATA IS DEEMED RELIABLE BUT IS NOT GUARANTEED ACCURATE BY THE REALTORS® ASSOCIATION OF EDMONTON. COPYRIGHT 2025 BY THE REALTORS® ASSOCIATION OF EDMONTON. ALL RIGHTS RESERVED. Trademarks are owned or controlled by the Canadian Real Estate Association (CREA) and identify real estate professionals who are members of CREA (REALTOR®, REALTORS®) and/or the quality of services they provide (MLS®, Multiple Listing Service®)

Listing information last updated on June 17th, 2025 at 3:32am MDT