

Courtesy Of Manjeet S Sandhu Of MaxWell Polaris

\$213,000 - 419 3715 Whitelaw Lane, Edmonton

MLS® #E4441968

\$213,000

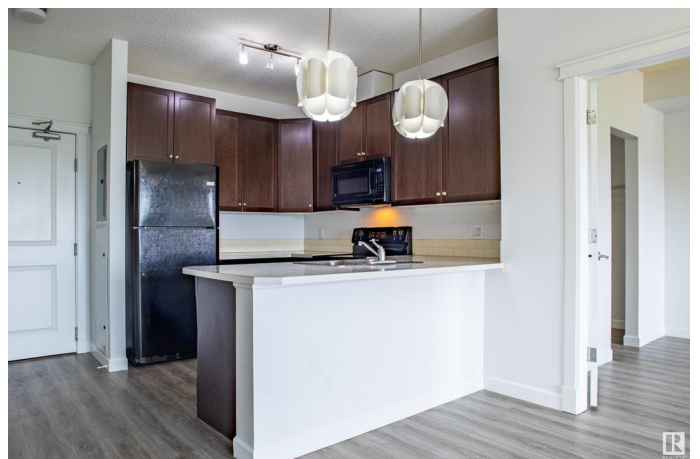
2 Bedroom, 2.00 Bathroom, 800 sqft

Condo / Townhouse on 0.00 Acres

Windermere, Edmonton, AB

"PRESTIGIOUS WINDERMERE VILLAGE"

You will be impressed with Top floor unit. The "MODERN BAR-TYPE KITCHEN" has an abundance of dark cappuccino cabinets with a breakfast counter and black appliances. There is a large bright living room with access to a private balcony with gas hook up for a BBQ & a gorgeous view. Some other features include: 2 good sized bedrooms, 2 bathrooms, "2 HEATED UNDERGROUND PARKING STALLS", underground storage cage, in suite laundry, built in computer desk, huge master bedroom with walk through closet & 3 piece ensuite with a massive 2 person walk in shower. The second bedroom also has a walk through closet with access to the main bathroom. Well managed complex & "ALL UTILITIES INCLUDING ELECTRICITY" are included in the condo fees & is wired with high fibre optics. Unit is freshly painted in warm inviting colours new luxury vinyl flooring. This complex has a fitness centre & is conveniently located close to shopping, public transit, schools & the Anthony Henday! A Must to See!



Built in 2011

Essential Information

MLS® # E4441968

Price \$213,000

Bedrooms	2
Bathrooms	2.00
Full Baths	2
Square Footage	800
Acres	0.00
Year Built	2011
Type	Condo / Townhouse
Sub-Type	Lowrise Apartment
Style	Single Level Apartment
Status	Active

Community Information

Address	419 3715 Whitelaw Lane
Area	Edmonton
Subdivision	Windermere
City	Edmonton
County	ALBERTA
Province	AB
Postal Code	T6W 2C3

Amenities

Amenities	Exercise Room, No Animal Home, No Smoking Home, Parking-Visitor
Parking Spaces	2
Parking	Heated, Underground

Interior

Interior Features	ensuite bathroom
Appliances	Dishwasher-Built-In, Microwave Hood Fan, Stacked Washer/Dryer, Stove-Electric
Heating	Hot Water, Natural Gas
# of Stories	4
Stories	4
Has Basement	Yes
Basement	None, No Basement

Exterior

Exterior	Wood, Brick, Stucco
Exterior Features	Commercial, Playground Nearby, Public Transportation, Schools, Shopping Nearby

Roof	Asphalt Shingles
Construction	Wood, Brick, Stucco
Foundation	Concrete Perimeter

Additional Information

Date Listed	June 12th, 2025
Days on Market	14
Zoning	Zone 56
HOA Fees	110.15
HOA Fees Freq.	Annually
Condo Fee	\$560

DATA IS DEEMED RELIABLE BUT IS NOT GUARANTEED ACCURATE BY THE REALTORS® ASSOCIATION OF EDMONTON. COPYRIGHT 2025 BY THE REALTORS® ASSOCIATION OF EDMONTON. ALL RIGHTS RESERVED.Trademarks are owned or controlled by the Canadian Real Estate Association (CREA) and identify real estate professionals who are members of CREA (REALTOR®, REALTORS®) and/or the quality of services they provide (MLS®, Multiple Listing Service®)

Listing information last updated on June 26th, 2025 at 4:32am MDT