

## \$598,707 - 145 Sumac Lane, Sherwood Park

MLS® #E4441709

**\$598,707**

4 Bedroom, 3.50 Bathroom, 1,680 sqft

Single Family on 0.00 Acres

Summerwood, Sherwood Park, AB

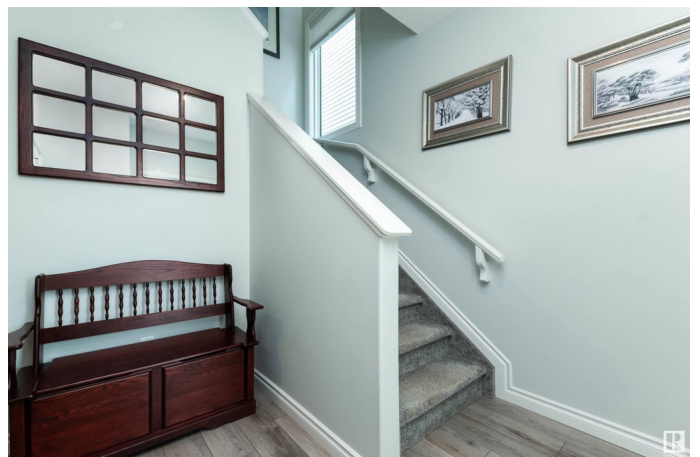
BEAUTY IN SUMMERWOOD!!! This fabulous 2 storey home is built by Pacesetter & offers many attractive features throughout! Modern design with a generous entry way, vinyl plank flooring & a STUNNING KITCHEN!! High end finishings with gorgeous Quartz countertops, stainless steel appliances, large island, walk-through pantry & a big dining area. Open & bright living room. Walk out to the BEAUTIFUL & PRIVATE BACKYARD! Featuring a covered deck, greenhouse & second deck plus garden boxes & shed. Upstairs are 3 bedrooms, 4 piece bathroom, laundry room & bonus area. GORGEOUS 5 piece ensuite & walk-in closet in Primary Bedroom. The basement offers a 4th bedroom, 3 piece bathroom, wine-making room, utility room & tons of storage space! HEATED DOUBLE GARAGE with epoxy flooring plus storage in the mezzanine! WATER SOFTENER & CENTRAL AIR-CONDITIONING too! Close to parks, trails, shopping & more! Incredible value in one of Sherwood Park's most desirable family communities! Visit REALTOR® website for more information.

Built in 2021

### Essential Information

MLS® #

E4441709



Price	\$598,707
Bedrooms	4
Bathrooms	3.50
Full Baths	3
Half Baths	1
Square Footage	1,680
Acres	0.00
Year Built	2021
Type	Single Family
Sub-Type	Detached Single Family
Style	2 Storey
Status	Active

### Community Information

Address	145 Sumac Lane
Area	Sherwood Park
Subdivision	Summerwood
City	Sherwood Park
County	ALBERTA
Province	AB
Postal Code	T8H 1Z9

### Amenities

Amenities	Air Conditioner, Deck
Parking	Double Garage Attached, Heated

### Interior

Interior Features	ensuite bathroom
Appliances	Air Conditioning-Central, Dishwasher-Built-In, Dryer, Garage Control, Garage Opener, Hood Fan, Refrigerator, Storage Shed, Stove-Electric, Washer, Water Softener, TV Wall Mount, Garage Heater
Heating	Forced Air-1, Natural Gas
Stories	3
Has Basement	Yes
Basement	Full, Partially Finished

### Exterior

Exterior	Wood, Stone, Vinyl
Exterior Features	Fenced, Flat Site, Landscaped, Playground Nearby, Private Setting,

Public Transportation, Schools, Shopping Nearby

Roof	Asphalt Shingles
Construction	Wood, Stone, Vinyl
Foundation	Concrete Perimeter

**Additional Information**

Date Listed	June 11th, 2025
Days on Market	5
Zoning	Zone 25

DATA IS DEEMED RELIABLE BUT IS NOT GUARANTEED ACCURATE BY THE REALTORS® ASSOCIATION OF EDMONTON. COPYRIGHT 2025 BY THE REALTORS® ASSOCIATION OF EDMONTON. ALL RIGHTS RESERVED.Trademarks are owned or controlled by the Canadian Real Estate Association (CREA) and identify real estate professionals who are members of CREA (REALTOR®, REALTORS®) and/or the quality of services they provide (MLS®, Multiple Listing Service®)

Listing information last updated on June 16th, 2025 at 2:32pm MDT