

\$25,900 - 440 6 Street, Thorhild

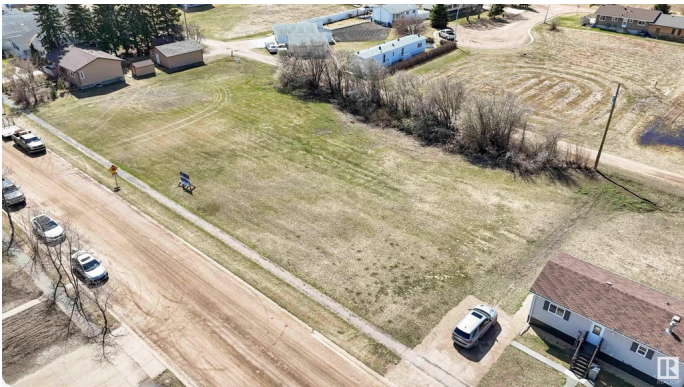
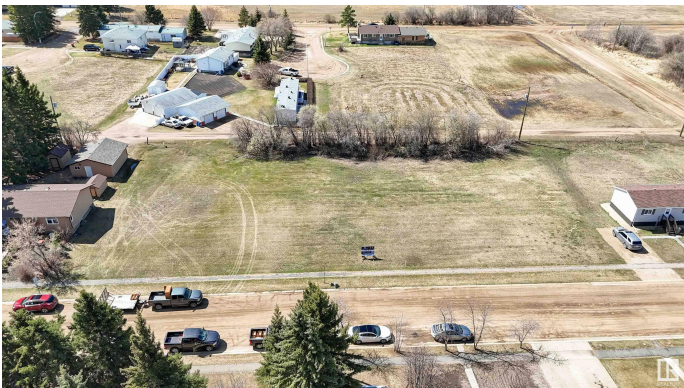
MLS® #E4441376

\$25,900

0 Bedroom, 0.00 Bathroom,
Single Family on 0.00 Acres

Thorhild, Thorhild, AB

Why pay rising land rental fees when you can own your own piece? This 50' x 129' lot welcomes modular homes, offering the perfect canvas to build a custom space that suits your lifestyle. Whether you're a growing family or planning a cozy retirement, investing in your own lot brings stability and financial peace of mind. Picture your dream modular home, designed just the way you want it, all for under \$200,000. Thorhild is more than a place to live—it's a thriving community with everything you need. Enjoy the local parks, a K-12 school, ATB bank, medical & dental clinics, pharmacy, and more. For fun and fitness, the Arena hosts sports and events, and the outdoor pool is perfect for sunny days. With Long Lake just a scenic 40-minute drive away, outdoor adventures are never far. Discover local boutiques, savor delicious Italian cuisine, and experience the charm of small-town living. Stop renting and start building your future in Thorhild—5 lots available, so don't miss out! Low property taxes! \$255.03/year



Essential Information

MLS® #	E4441376
Price	\$25,900
Bathrooms	0.00
Acres	0.00

Type	Single Family
Sub-Type	Vacant Lot/Land
Status	Active

Community Information

Address	440 6 Street
Area	Thorhild
Subdivision	Thorhild
City	Thorhild
County	ALBERTA
Province	AB
Postal Code	T0A 3J0

Exterior

Exterior Features Back Lane, Flat Site, Schools, Shopping Nearby

Additional Information

Date Listed	June 9th, 2025
Days on Market	15
Zoning	Zone 60

DATA IS DEEMED RELIABLE BUT IS NOT GUARANTEED ACCURATE BY THE REALTORS® ASSOCIATION OF EDMONTON. COPYRIGHT 2025 BY THE REALTORS® ASSOCIATION OF EDMONTON. ALL RIGHTS RESERVED.Trademarks are owned or controlled by the Canadian Real Estate Association (CREA) and identify real estate professionals who are members of CREA (REALTOR®, REALTORS®) and/or the quality of services they provide (MLS®, Multiple Listing Service®)

Listing information last updated on June 24th, 2025 at 1:48pm MDT