

Courtesy Of Janeen Tinker Of Real Broker

\$958,000 - 11230 34a Avenue, Edmonton

MLS® #E4438889

\$958,000

5 Bedroom, 3.50 Bathroom, 2,195 sqft

Single Family on 0.00 Acres

Greenfield, Edmonton, AB

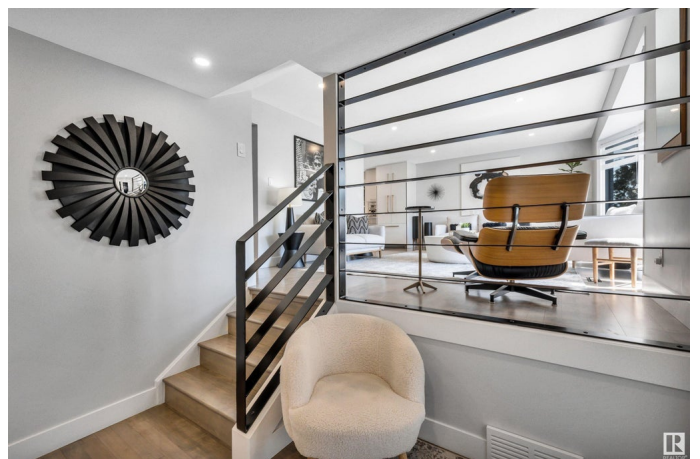
Welcome to the coveted community of Greenfield. This fully renovated Ace Lange-built home offers over 3,000 sqft of thoughtfully developed living space, quality craftsmanship & timeless design. The stunning kitchen features custom cabinetry, an expansive island, beverage station & large dining area. Enjoy 2 main floor living rooms—one with a gas fireplace & sliding doors leading to a huge deck, hot tub & private backyard oasis. Upstairs has 3 bedrooms, including a primary with walk-in closet & ensuite, plus a 5-piece bath & walk-in linen closet. The lower level includes 2 more bedrooms, a rec room, full bath, workout room, and storage. Custom mudroom on the main could convert to a 6th bedroom. Extensive upgrades include \$350K in renovations (kitchen, bathrooms, trim, doors, cabinetry, more) and \$85K in Hardy board siding(2024) adding curb-appeal & long-term value. Double garage, A/C, refinished hardwood, shingles (2020, \$20k), eaves & fascia. Steps to top schools, parks, Derrick Club, UofA & amenities.

Built in 1976

Essential Information

MLS® # E4438889

Price \$958,000



Bedrooms	5
Bathrooms	3.50
Full Baths	3
Half Baths	1
Square Footage	2,195
Acres	0.00
Year Built	1976
Type	Single Family
Sub-Type	Detached Single Family
Style	5 Level Split
Status	Active

Community Information

Address	11230 34a Avenue
Area	Edmonton
Subdivision	Greenfield
City	Edmonton
County	ALBERTA
Province	AB
Postal Code	T6J 3M5

Amenities

Amenities	Air Conditioner, Hot Tub, See Remarks
Parking	Double Garage Attached

Interior

Interior Features	ensuite bathroom
Appliances	Air Conditioning-Central, Dishwasher-Built-In, Dryer, Oven-Microwave, Storage Shed, Stove-Gas, Washer, Window Coverings, Wine/Beverage Cooler, Refrigerators-Two, Hot Tub
Heating	Forced Air-2, Natural Gas
Fireplace	Yes
Fireplaces	See Remarks
Stories	5
Has Basement	Yes
Basement	See Remarks, Finished

Exterior

Exterior	Wood, Brick, Hardie Board Siding
----------	----------------------------------

Exterior Features	Golf Nearby, Playground Nearby, Public Transportation, Schools, Shopping Nearby, See Remarks
Roof	Asphalt Shingles
Construction	Wood, Brick, Hardie Board Siding
Foundation	Concrete Perimeter

Additional Information

Date Listed	May 28th, 2025
Days on Market	20
Zoning	Zone 16

DATA IS DEEMED RELIABLE BUT IS NOT GUARANTEED ACCURATE BY THE REALTORS® ASSOCIATION OF EDMONTON. COPYRIGHT 2025 BY THE REALTORS® ASSOCIATION OF EDMONTON. ALL RIGHTS RESERVED.Trademarks are owned or controlled by the Canadian Real Estate Association (CREA) and identify real estate professionals who are members of CREA (REALTOR®, REALTORS®) and/or the quality of services they provide (MLS®, Multiple Listing Service®)

Listing information last updated on June 16th, 2025 at 11:47pm MDT