

Courtesy Of Bob Maskell Of Royal Lepage Arteam Realty

\$1,100,000 - 51524 Rge Road 265, Rural Parkland County

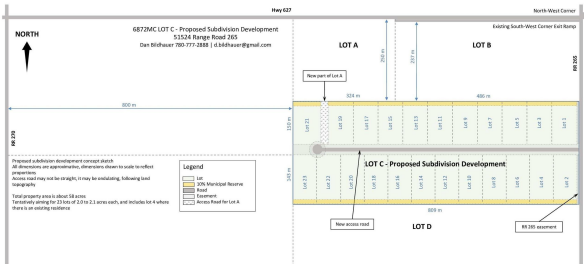
MLS® #E4435230

\$1,100,000

0 Bedroom, 0.00 Bathroom,
Land Commercial on 0.00 Acres

None, Rural Parkland County, AB

57.93 acres of proposed subdivision development for 23 2.2 acre building lots. Seller has been approved to move forward with a subdivision plan.



Essential Information

MLS® #	E4435230
Price	\$1,100,000
Bathrooms	0.00
Acres	0.00
Type	Land Commercial
Status	Active

Community Information

Address	51524 Rge Road 265
Area	Rural Parkland County
Subdivision	None
City	Rural Parkland County
County	ALBERTA
Province	AB
Postal Code	T7Y 1E9

Additional Information

Date Listed	May 8th, 2025
Days on Market	112
Zoning	Zone 90

DATA IS DEEMED RELIABLE BUT IS NOT GUARANTEED ACCURATE BY THE REALTORS® ASSOCIATION OF EDMONTON. COPYRIGHT 2025 BY THE REALTORS® ASSOCIATION OF EDMONTON. ALL RIGHTS RESERVED.Trademarks are owned or controlled by the Canadian Real Estate Association (CREA) and identify real estate professionals who are members of CREA (REALTOR®, REALTORS®) and/or the quality of services they provide (MLS®, Multiple Listing Service®)

Listing information last updated on August 27th, 2025 at 9:31pm MDT