

# \$279,900 - 405 273 Charlotte Way, Sherwood Park

MLS® #E4434739

**\$279,900**

2 Bedroom, 2.00 Bathroom, 1,051 sqft  
Condo / Townhouse on 0.00 Acres

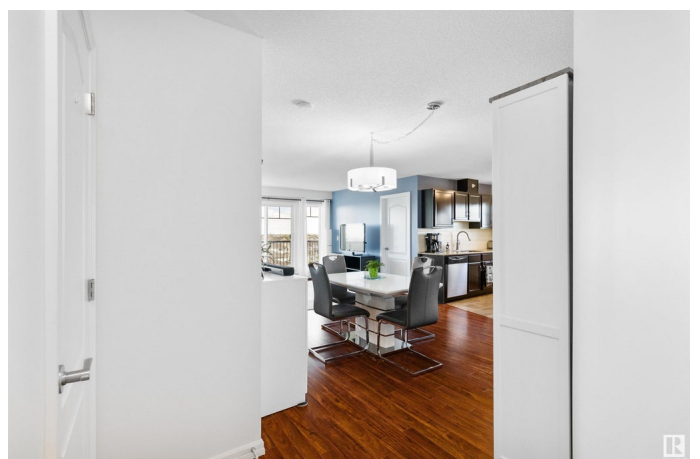
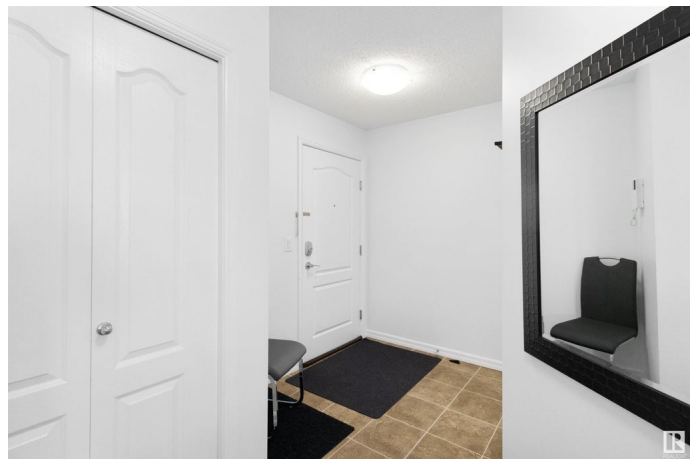
Lakeland Ridge, Sherwood Park, AB

Welcome to this bright and sunny top-floor corner unit, where natural light pours in through expansive windows, creating a warm and inviting space. Enjoy stunning views from the large private deck—perfect for morning coffee or evening relaxation. The open floor plan features a spacious living area ideal for entertaining or unwinding. The master bedroom has walk through closet to full ensuite for added privacy. The second bedroom has good sized closet and large window. The versatile den has 2 windows, plenty of space for guests, a home office, or hobbies. A walk-in pantry and in-suite laundry add convenience, and there's ample storage throughout. This home includes two titled parking stalls for ultimate flexibility. Located in a well-maintained, centrally located building close to shops, restaurants, and transit, this unit combines comfort, style, and practicality in one fantastic package. Don't miss the opportunity to live in one of the best spots in the building!

Built in 2011

## Essential Information

|          |           |
|----------|-----------|
| MLS® #   | E4434739  |
| Price    | \$279,900 |
| Bedrooms | 2         |



|                |                        |
|----------------|------------------------|
| Bathrooms      | 2.00                   |
| Full Baths     | 2                      |
| Square Footage | 1,051                  |
| Acres          | 0.00                   |
| Year Built     | 2011                   |
| Type           | Condo / Townhouse      |
| Sub-Type       | Lowrise Apartment      |
| Style          | Single Level Apartment |
| Status         | Active                 |

### Community Information

|             |                       |
|-------------|-----------------------|
| Address     | 405 273 Charlotte Way |
| Area        | Sherwood Park         |
| Subdivision | Lakeland Ridge        |
| City        | Sherwood Park         |
| County      | ALBERTA               |
| Province    | AB                    |
| Postal Code | T8H 0N9               |

### Amenities

|           |   |
|-----------|---|
| Amenities | No Animal Home, No Smoking Home, Storage-In-Suite |
| Parking   | 2 Outdoor Stalls                                  |

### Interior

|                   |  |
|-------------------|--|
| Interior Features | ensuite bathroom   |
| Appliances        | Dishwasher-Built-In, Dryer, Refrigerator, Stove-Electric, Washer, Window Coverings |
| Heating           | Hot Water, Natural Gas   |
| # of Stories      | 4  |
| Stories           | 4  |
| Has Basement      | Yes  |
| Basement          | None, No Basement  |

### Exterior

|                   |   |
|-------------------|---|
| Exterior          | Wood, Stone, Vinyl  |
| Exterior Features | Cul-De-Sac, Landscaped, Playground Nearby, Schools, Shopping Nearby |
| Roof              | Asphalt Shingles  |
| Construction      | Wood, Stone, Vinyl  |

Foundation            Concrete Perimeter

**Additional Information**

Date Listed            May 6th, 2025

Days on Market      10

Zoning                Zone 25

Condo Fee            \$549

DATA IS DEEMED RELIABLE BUT IS NOT GUARANTEED ACCURATE BY THE REALTORS® ASSOCIATION OF EDMONTON. COPYRIGHT 2025 BY THE REALTORS® ASSOCIATION OF EDMONTON. ALL RIGHTS RESERVED. Trademarks are owned or controlled by the Canadian Real Estate Association (CREA) and identify real estate professionals who are members of CREA (REALTOR®, REALTORS®) and/or the quality of services they provide (MLS®, Multiple Listing Service®)

Listing information last updated on May 16th, 2025 at 11:17am MDT