

\$274,900 - 1810 10024 Jasper Avenue, Edmonton

MLS® #E4434389

\$274,900

2 Bedroom, 2.00 Bathroom, 932 sqft

Condo / Townhouse on 0.00 Acres

Downtown (Edmonton), Edmonton, AB

Experience urban living at its finest in this stunning 2-storey loft, perched on the top floor at Cambridge Lofts in the heart of Downtown Edmonton. Boasting soaring ceilings and a unique 2-way ceiling fan that optimizes airflow year-round, this bright and airy home offers a rare blend of style and function. Enjoy breathtaking south-facing river valley views through tinted windows that ensure privacy and comfort. The main floor features a spacious bedroom, a full bathroom, and a stylish open-concept living area, while the upper loft provides flexible space for work or relaxation with an extra full bathroom. Step out your door and ride the elevator directly to Central LRT Stationâ€”perfect for commuting or exploring the city. Walking distance to Edmonton's most coveted ICE District. Titled storage and low property taxes, pet friendly. A must-see for anyone seeking convenience, character, and a vibrant downtown lifestyle or someone who's looking for an ideal property for AirBnB.

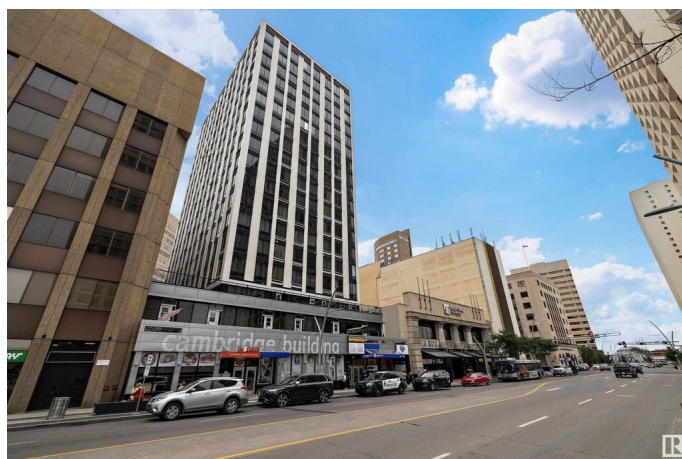
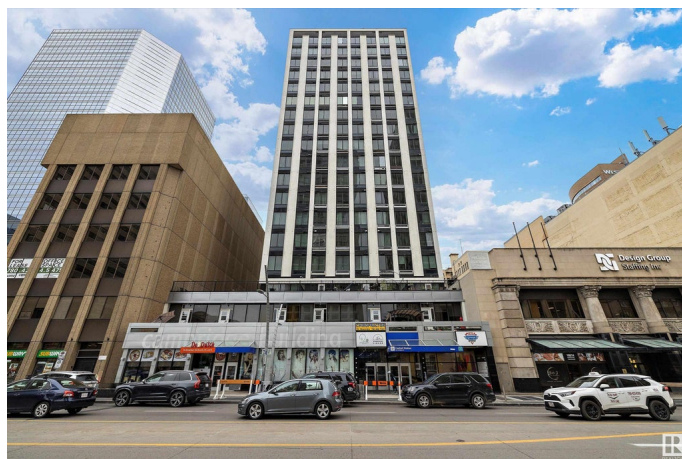
Built in 1968

Essential Information

MLS® # E4434389

Price \$274,900

Bedrooms 2



Bathrooms	2.00
Full Baths	2
Square Footage	932
Acres	0.00
Year Built	1968
Type	Condo / Townhouse
Sub-Type	Apartment High Rise
Style	Single Level Apartment
Status	Active

Community Information

Address	1810 10024 Jasper Avenue
Area	Edmonton
Subdivision	Downtown (Edmonton)
City	Edmonton
County	ALBERTA
Province	AB
Postal Code	T5J 1R9

Amenities

Amenities	No Smoking Home, Storage-Locker Room, See Remarks
Parking	No Parking

Interior

Appliances	Dishwasher-Built-In, Dryer, Fan-Ceiling, Microwave Hood Fan, Refrigerator, Stove-Electric, Washer
Heating	Baseboard, Electric
# of Stories	18
Stories	2
Has Basement	Yes
Basement	None, No Basement

Exterior

Exterior	Concrete, Metal
Exterior Features	Public Transportation, River Valley View, Shopping Nearby, View Downtown, See Remarks
Roof	Tar & Gravel
Construction	Concrete, Metal
Foundation	Concrete Perimeter

Additional Information

Date Listed	May 3rd, 2025
Days on Market	8
Zoning	Zone 12
Condo Fee	\$620

DATA IS DEEMED RELIABLE BUT IS NOT GUARANTEED ACCURATE BY THE REALTORS® ASSOCIATION OF EDMONTON. COPYRIGHT 2025 BY THE REALTORS® ASSOCIATION OF EDMONTON. ALL RIGHTS RESERVED.Trademarks are owned or controlled by the Canadian Real Estate Association (CREA) and identify real estate professionals who are members of CREA (REALTOR®, REALTORS®) and/or the quality of services they provide (MLS®, Multiple Listing Service®)

Listing information last updated on May 11th, 2025 at 4:02pm MDT