

\$550,000 - 112 41 Woods Crescent, Leduc

MLS® #E4434300

\$550,000

3 Bedroom, 3.00 Bathroom, 1,537 sqft

Condo / Townhouse on 0.00 Acres

Windrose, Leduc, AB

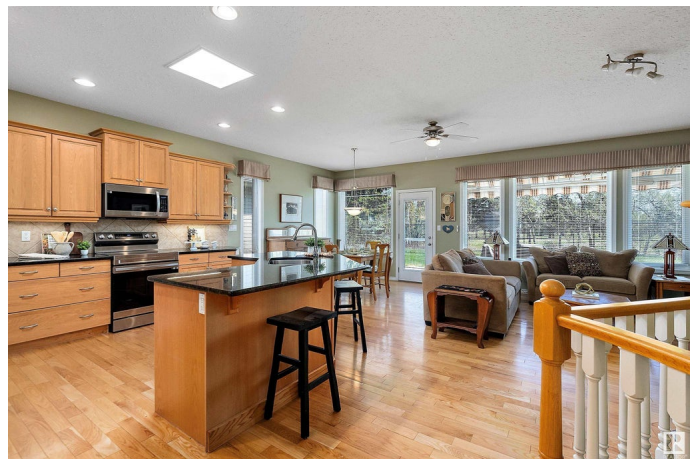
Rare opportunity in Woodland Greensâ€”a gated adult (18+) community in desirable Windrose, backing the Leduc Golf & Country Club! Spacious bungalow condo that offers maintenance-free living & features a bright, open-concept main floor with hardwood floors, granite countertops, corner pantry, gas fireplace, & dining area that looks out onto a concrete patio overlooking the golf course. The main level has 2 generously sized bedrooms, including a large primary suite with a 4-piece ensuite & ample closet space. The second bedroom is ideal for guests or can easily function as a home office. A second full bathroom & convenient main-floor laundry/mudroom complete the upper level. The fully finished basement adds more space w/ a huge rec room featuring a wet bar, a 3rd bedroom, 3-piece bathroom, workshop, craft room, plenty of storage & in floor heating. Well-managed complex in an unbeatable location with lawn & snow care included. Close to walking paths, shopping, & much more. A rare find!

Built in 2004

Essential Information

MLS® # E4434300

Price \$550,000



Bedrooms	3
Bathrooms	3.00
Full Baths	3
Square Footage	1,537
Acres	0.00
Year Built	2004
Type	Condo / Townhouse
Sub-Type	Half Duplex
Style	Bungalow
Status	Active

Community Information

Address	112 41 Woods Crescent
Area	Leduc
Subdivision	Windrose
City	Leduc
County	ALBERTA
Province	AB
Postal Code	T9E 8K7

Amenities

Amenities	Air Conditioner, Patio, Wet Bar
Parking	Double Garage Attached

Interior

Interior Features	ensuite bathroom
Appliances	Dishwasher-Built-In, Dryer, Freezer, Garage Opener, Oven-Microwave, Refrigerator, Stove-Electric, Washer, Window Coverings
Heating	Forced Air-1, Natural Gas
Fireplace	Yes
Fireplaces	Mantel
Stories	2
Has Basement	Yes
Basement	Full, Finished

Exterior

Exterior	Wood, Brick, Vinyl
Exterior Features	Airport Nearby, Cul-De-Sac, Flat Site, Gated Community, Golf Nearby, Landscaped, No Through Road, Shopping Nearby, See Remarks

Roof	Asphalt Shingles
Construction	Wood, Brick, Vinyl
Foundation	Concrete Perimeter

Additional Information

Date Listed	May 3rd, 2025
Days on Market	14
Zoning	Zone 81
Condo Fee	\$218

DATA IS DEEMED RELIABLE BUT IS NOT GUARANTEED ACCURATE BY THE REALTORS® ASSOCIATION OF EDMONTON. COPYRIGHT 2025 BY THE REALTORS® ASSOCIATION OF EDMONTON. ALL RIGHTS RESERVED.Trademarks are owned or controlled by the Canadian Real Estate Association (CREA) and identify real estate professionals who are members of CREA (REALTOR®, REALTORS®) and/or the quality of services they provide (MLS®, Multiple Listing Service®)

Listing information last updated on May 17th, 2025 at 10:32am MDT