

\$475,000 - 10411 31 Avenue, Edmonton

MLS® #E4433622

\$475,000

4 Bedroom, 2.50 Bathroom, 1,228 sqft

Single Family on 0.00 Acres

Steinhauer, Edmonton, AB

Nestled in sought-after Steinhauer, this spacious 4-level split is the perfect canvas for your dream family home. With a bit of TLC, it's ready to sparkle again! The main floor features bright, open living and dining spaces with new vinyl plank flooring and a large kitchen with upgraded gas stove with double oven, and Miele dishwasher. Upstairs you'll find a roomy primary with 2pc en suite, two more bedrooms & a 4pc bath. The lower level offers a cozy family room with wood-burning fireplace, a bedroom, and a 3pc bath. The finished basement has a great rec room with wet bar, laundry with upgraded Whirlpool washer/dryer, and tons of storage. Outside, enjoy the stone patio, garden space, 3 sheds, and room to play. Oversized heated garage with workbench, shelving & bonus electrical panel—perfect for DIYers. RV pad included too! All this AND enjoy the central Air conditioning to stay cool all summer long! Located steps from schools, parks, shopping & the LRT—location is a 10/10.

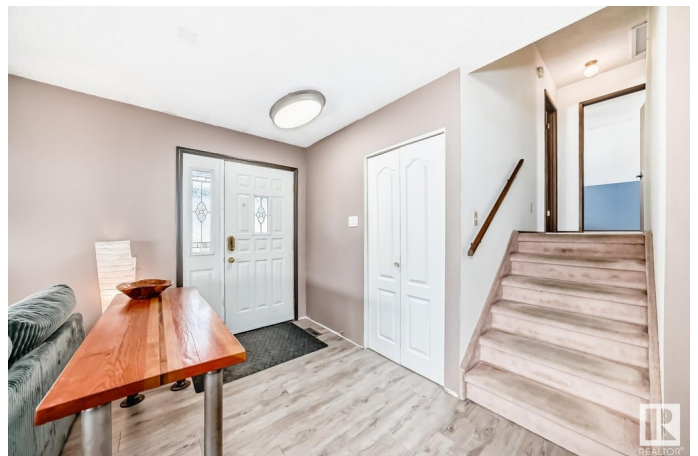
Built in 1975

Essential Information

MLS® # E4433622

Price \$475,000

Bedrooms 4



Bathrooms	2.50
Full Baths	2
Half Baths	1
Square Footage	1,228
Acres	0.00
Year Built	1975
Type	Single Family
Sub-Type	Detached Single Family
Style	4 Level Split
Status	Active

Community Information

Address	10411 31 Avenue
Area	Edmonton
Subdivision	Steinhauer
City	Edmonton
County	ALBERTA
Province	AB
Postal Code	T6J 3K2

Amenities

Amenities	Air Conditioner, Deck
Parking Spaces	5
Parking	Double Garage Detached, Heated, Over Sized, RV Parking

Interior

Interior Features	ensuite bathroom
Appliances	Air Conditioning-Central, Dishwasher-Built-In, Dryer, Refrigerator, Stove-Electric, Washer
Heating	Forced Air-1, Natural Gas
Fireplace	Yes
Fireplaces	Brick Facing
Stories	4
Has Basement	Yes
Basement	Full, Finished

Exterior

Exterior	Wood, Vinyl
Exterior Features	Corner Lot

Roof	Asphalt Shingles
Construction	Wood, Vinyl
Foundation	Concrete Perimeter

Additional Information

Date Listed	May 1st, 2025
Days on Market	2
Zoning	Zone 16

DATA IS DEEMED RELIABLE BUT IS NOT GUARANTEED ACCURATE BY THE REALTORS® ASSOCIATION OF EDMONTON. COPYRIGHT 2025 BY THE REALTORS® ASSOCIATION OF EDMONTON. ALL RIGHTS RESERVED.Trademarks are owned or controlled by the Canadian Real Estate Association (CREA) and identify real estate professionals who are members of CREA (REALTOR®, REALTORS®) and/or the quality of services they provide (MLS®, Multiple Listing Service®)

Listing information last updated on May 3rd, 2025 at 12:32pm MDT