

## \$799,000 - 2008 Genesis Lane, Stony Plain

MLS® #E4433160

**\$799,000**

4 Bedroom, 3.00 Bathroom, 1,684 sqft

Single Family on 0.00 Acres

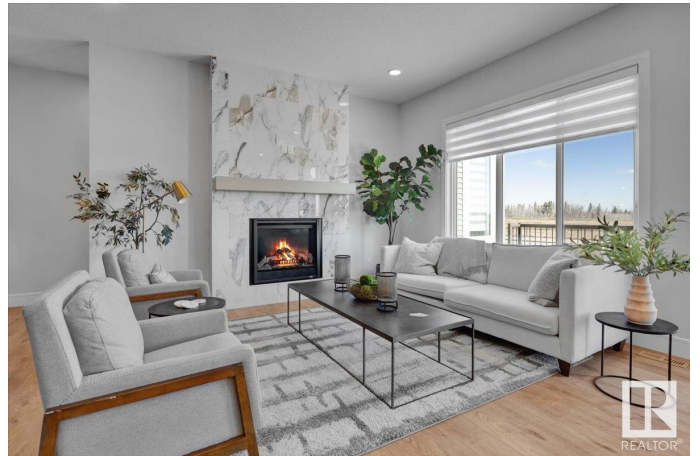
Genesis On The Lakes, Stony Plain, AB

Welcome to this exceptional bungalow in the highly sought-after Genesis community—where elegance meets lifestyle. Ideally located near tranquil walking paths and the lake, this home offers a rare opportunity to enjoy both luxury and nature in one of the area's most desirable settings. Built with care and precision, this home features high-end finishes throughout, including premium lighting, flooring, cabinetry, and sophisticated fixtures that create a timeless aesthetic. The bright, open-concept main living area is perfect for both everyday living and entertaining, with a chef-inspired kitchen showcasing top-tier appliances, a large island, and thoughtful storage. The spacious primary suite offers a spa-like ensuite and walk-in closet. A triple front-attached garage provides ample room for vehicles, storage, or hobbies, while the fully finished basement extends your living space with additional bedrooms, a family room, and a full bathroom—IMMEDIATE POSSESSION!!

Built in 2025

### Essential Information

MLS® #	E4433160
Price	\$799,000
Bedrooms	4
Bathrooms	3.00



Full Baths	3
Square Footage	1,684
Acres	0.00
Year Built	2025
Type	Single Family
Sub-Type	Detached Single Family
Style	Bungalow
Status	Active

### Community Information

Address	2008 Genesis Lane
Area	Stony Plain
Subdivision	Genesis On The Lakes
City	Stony Plain
County	ALBERTA
Province	AB
Postal Code	T7Z 0G3

### Amenities

Amenities	Deck, No Animal Home, No Smoking Home
Parking	Triple Garage Attached

### Interior

Interior Features	ensuite bathroom
Appliances	Dishwasher-Built-In, Hood Fan, Oven-Built-In, Oven-Microwave, Refrigerator, Stove-Electric
Heating	Forced Air-1, Natural Gas
Fireplace	Yes
Fireplaces	Insert
Stories	2
Has Basement	Yes
Basement	Full, Finished

### Exterior

Exterior	Wood, Stone, Vinyl
Exterior Features	Lake Access Property, Park/Reserve, Playground Nearby, Schools, Shopping Nearby
Roof	Asphalt Shingles
Construction	Wood, Stone, Vinyl

Foundation                      Concrete Perimeter

**Additional Information**

Date Listed                      April 28th, 2025

Days on Market                50

Zoning                              Zone 91

DATA IS DEEMED RELIABLE BUT IS NOT GUARANTEED ACCURATE BY THE REALTORS® ASSOCIATION OF EDMONTON. COPYRIGHT 2025 BY THE REALTORS® ASSOCIATION OF EDMONTON. ALL RIGHTS RESERVED.Trademarks are owned or controlled by the Canadian Real Estate Association (CREA) and identify real estate professionals who are members of CREA (REALTOR®, REALTORS®) and/or the quality of services they provide (MLS®, Multiple Listing Service®)

Listing information last updated on June 17th, 2025 at 9:17am MDT