

\$294,900 - 105 10265 107 Street, Edmonton

MLS® #E4431315

\$294,900

1 Bedroom, 1.00 Bathroom, 1,075 sqft

Condo / Townhouse on 0.00 Acres

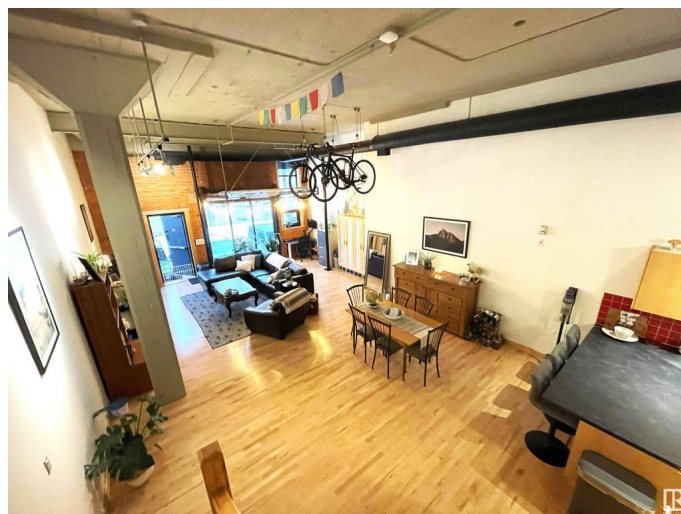
Downtown (Edmonton), Edmonton, AB

Loft Living In the Heart of Ice District! Beatty Lofts offers a mix of residential and commercial use units and this stunning condo is truly unique. The 1,075 sqft of industrial-chic space is full of character! Soaring 14-ft ceilings, exposed brick wall and huge windows, hardwood and tiled floors, concrete pillars, and original warehouse garage door that opens to a wall of windows. The open layout includes a stylish kitchen with SS Appliances, ample counter space, and a spacious island for entertaining. The added bonus of 158 sqft for the upper loft is perfect for a cozy primary suite. Unique features include a 2-bike pulley system, private rear door (ideal for deliveries or easy move-ins) in-suite laundry, assigned parking, and access to a shared patio. Pet-friendly with board approval and a well-managed Exclusive 20-unit building. Just steps to the future Warehouse Park, Rogers Place, MacEwan University, dining, shops, the farmersâ€™ market, and the list goes on!

Built in 1949

Essential Information

MLS® #	E4431315
Price	\$294,900
Bedrooms	1



Bathrooms	1.00
Full Baths	1
Square Footage	1,075
Acres	0.00
Year Built	1949
Type	Condo / Townhouse
Sub-Type	Lowrise Apartment
Style	Loft
Status	Active

Community Information

Address	105 10265 107 Street
Area	Edmonton
Subdivision	Downtown (Edmonton)
City	Edmonton
County	ALBERTA
Province	AB
Postal Code	T5J 5G2

Amenities

Amenities	Off Street Parking, Air Conditioner, Detectors Smoke, Intercom, No Smoking Home, Smart/Program. Thermostat, Security Door, Sprinkler System-Fire, Rooftop Deck/Patio
Parking	Stall

Interior

Appliances	Dishwasher-Built-In, Microwave Hood Fan, Refrigerator, Stacked Washer/Dryer, Stove-Electric
Heating	Fan Coil, Natural Gas
# of Stories	2
Stories	2
Has Basement	Yes
Basement	None, No Basement

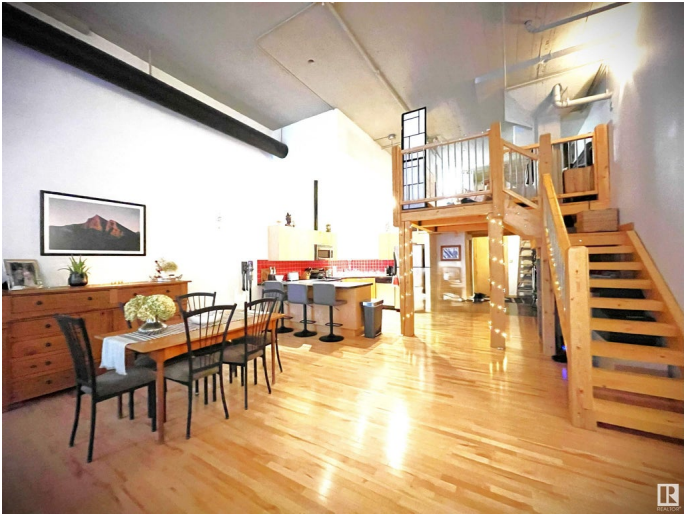
Exterior

Exterior	Brick
Exterior Features	Back Lane, Commercial, Corner Lot, Golf Nearby, Paved Lane, Public Transportation, Schools, Shopping Nearby, View City, View Downtown, See Remarks
Roof	Unknown

Construction	Brick
Foundation	Concrete Perimeter

Additional Information

Date Listed	April 17th, 2025
Days on Market	107
Zoning	Zone 12
Condo Fee	\$848



DATA IS DEEMED RELIABLE BUT IS NOT GUARANTEED ACCURATE BY THE REALTORS® ASSOCIATION OF EDMONTON. COPYRIGHT 2025 BY THE REALTORS® ASSOCIATION OF EDMONTON. ALL RIGHTS RESERVED.Trademarks are owned or controlled by the Canadian Real Estate Association (CREA) and identify real estate professionals who are members of CREA (REALTOR®, REALTORS®) and/or the quality of services they provide (MLS®, Multiple Listing Service®)

Listing information last updated on August 2nd, 2025 at 5:47am MDT