

\$350,000 - 1309 Wildrye Way, Cold Lake

MLS® #E4431110

\$350,000

4 Bedroom, 2.00 Bathroom, 1,000 sqft

Single Family on 0.00 Acres

Creekside Estates (Cold Lake), Cold Lake, AB

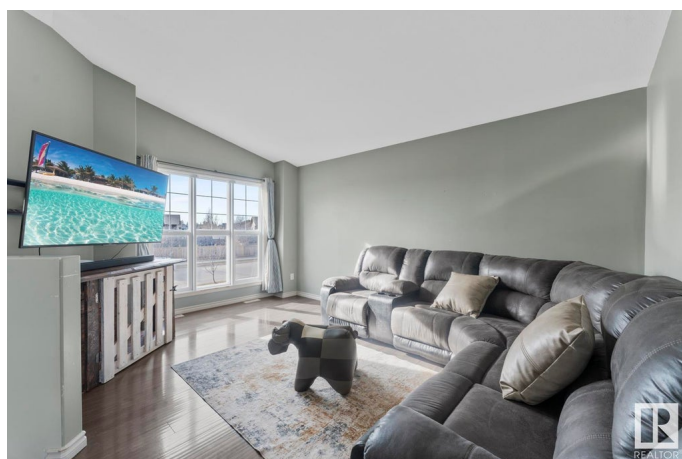
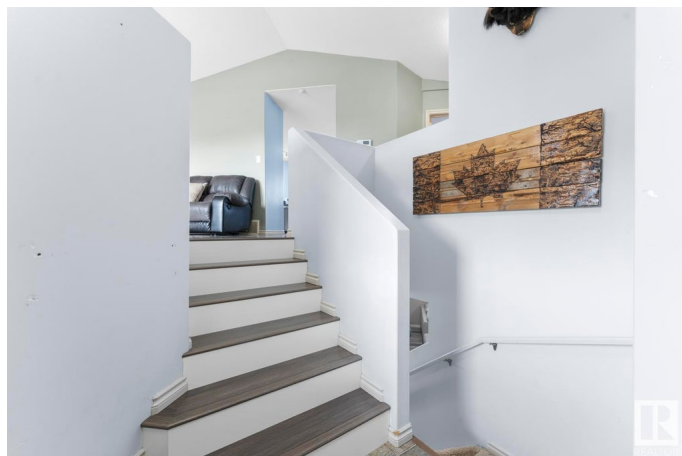
Fantastic 4 bedroom bilevel in Creekside Estates offers you everything you are looking for in a new home in Cold Lake - and is located in a quiet neighbourhood with a playground down the street, and no backyard neighbours! Finished up and down, this is great family home! Living room is spacious and bright and accented by beautiful flooring. The Kitchen/dining room is spacious and has access to your back deck which has recently been extended and has wiring for a hot tub already in place. The yard is also landscaped & fenced. There are 2 bedrooms on the main level with a cheater door from the bathroom leading into the spacious primary bedroom. Downstairs flooring has all been updated & has nice high ceilings, a big family room, & 2 additional bedrooms plus another full bath & laundry room. This home has everything you're looking for and more! Added bonuses are the freshly heated double attached garage, & Central Air Conditioning to keep you cool all summer! House is being freshly painted for the new owner.

Built in 2011

Essential Information

MLS® # E4431110

Price \$350,000



Bedrooms	4
Bathrooms	2.00
Full Baths	2
Square Footage	1,000
Acres	0.00
Year Built	2011
Type	Single Family
Sub-Type	Detached Single Family
Style	Bi-Level
Status	Active

Community Information

Address	1309 Wildrye Way
Area	Cold Lake
Subdivision	Creekside Estates (Cold Lake)
City	Cold Lake
County	ALBERTA
Province	AB
Postal Code	T9M 0B1

Amenities

Amenities	Air Conditioner, Deck, No Smoking Home, Vinyl Windows, See Remarks
Parking	Double Garage Attached, Heated

Interior

Appliances	Air Conditioning-Central, Dishwasher-Built-In, Dryer, Garage Control, Garage Opener, Microwave Hood Fan, Refrigerator, Stove-Electric, Washer, Window Coverings
Heating	Forced Air-1, Natural Gas
Stories	2
Has Basement	Yes
Basement	Full, Finished

Exterior

Exterior	Wood, Stone, Vinyl
Exterior Features	Fenced, Flat Site, Landscaped, Low Maintenance Landscape, See Remarks
Roof	Asphalt Shingles
Construction	Wood, Stone, Vinyl

Foundation Concrete Perimeter

School Information

Elementary Cold Lake Elementary
Middle Nelson Heights School
High Cold Lake High

Additional Information

Date Listed April 16th, 2025
Days on Market 16
Zoning Zone 60

DATA IS DEEMED RELIABLE BUT IS NOT GUARANTEED ACCURATE BY THE REALTORS® ASSOCIATION OF EDMONTON. COPYRIGHT 2025 BY THE REALTORS® ASSOCIATION OF EDMONTON. ALL RIGHTS RESERVED.Trademarks are owned or controlled by the Canadian Real Estate Association (CREA) and identify real estate professionals who are members of CREA (REALTOR®, REALTORS®) and/or the quality of services they provide (MLS®, Multiple Listing Service®)
Listing information last updated on May 2nd, 2025 at 1:47am MDT