

\$418,000 - 8901 78 Avenue, Edmonton

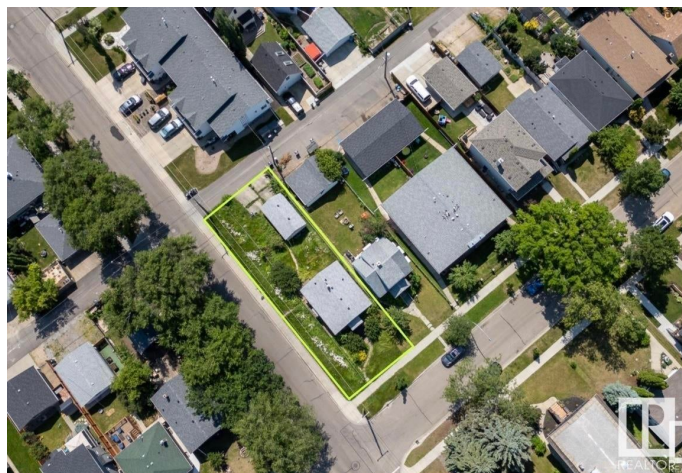
MLS® #E4430101

\$418,000

0 Bedroom, 0.00 Bathroom,
Single Family on 0.00 Acres

King Edward Park, Edmonton, AB

Corner Lot in highly desirable King Edward Park! Investor's and Builders.. Incredible development opportunity!! This property is being sold at Lot Value! In a prime location steps to Millcreek ravine, Whyte Ave , LRT, UofA, schools, parks, Bonnie Doon mall, pools, all Amenities and so much more ! One of Edmonton's Hottest Neighborhoods! Could be qualified for CMHC program.



Essential Information

MLS® #	E4430101
Price	\$418,000
Bathrooms	0.00
Acres	0.00
Type	Single Family
Sub-Type	Vacant Lot/Land
Status	Active

Community Information

Address	8901 78 Avenue
Area	Edmonton
Subdivision	King Edward Park
City	Edmonton
County	ALBERTA
Province	AB
Postal Code	T6C 0N7

Exterior

Exterior Features Corner Lot, Public Swimming Pool, Public Transportation, Schools, Shopping Nearby

Additional Information

Date Listed April 9th, 2025
Days on Market 23
Zoning Zone 17

DATA IS DEEMED RELIABLE BUT IS NOT GUARANTEED ACCURATE BY THE REALTORS® ASSOCIATION OF EDMONTON. COPYRIGHT 2025 BY THE REALTORS® ASSOCIATION OF EDMONTON. ALL RIGHTS RESERVED.Trademarks are owned or controlled by the Canadian Real Estate Association (CREA) and identify real estate professionals who are members of CREA (REALTOR®, REALTORS®) and/or the quality of services they provide (MLS®, Multiple Listing Service®)
Listing information last updated on May 2nd, 2025 at 3:02am MDT