

\$200,000 - 408 9519 160 Avenue, Edmonton

MLS® #E4429059

\$200,000

2 Bedroom, 2.00 Bathroom, 828 sqft

Condo / Townhouse on 0.00 Acres

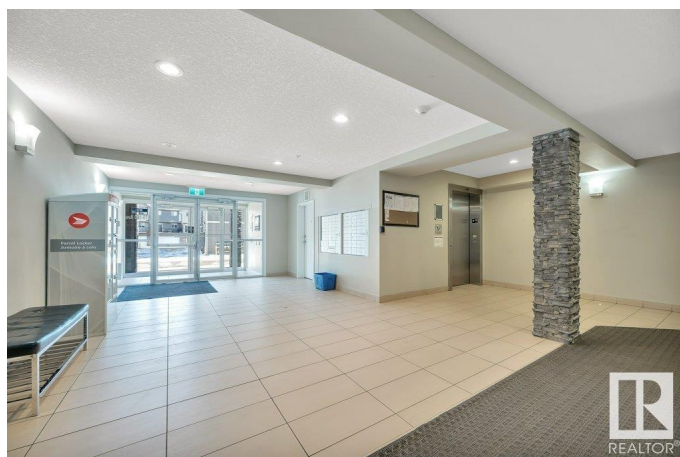
Eaux Claires, Edmonton, AB

TOP FLOOR, 2 bed, 2 bath condo with 2 parking stalls! This bright unit in The Radiance complex in Eaux Claires is steps from all amenities, such as ETS, Save-On-Foods, shopping, plenty of restaurants, medical clinics, and more! Enjoy a west-facing balcony for evening sun. Enjoy the heated floors and INSUITE laundry. The open-concept kitchen with an island and ample cupboard space overlooks the living room. The split-bedroom layout ensures privacy, with the primary suite featuring a walk-through closet and ensuite. Enjoy the convenience of in-suite laundry. Plus, you'll have quick access for your work commute to downtown or the Henday. Includes underground + surface parking. A fantastic opportunity—don't miss out!

Built in 2014

Essential Information

MLS® #	E4429059
Price	\$200,000
Bedrooms	2
Bathrooms	2.00
Full Baths	2
Square Footage	828
Acres	0.00
Year Built	2014



Type	Condo / Townhouse
Sub-Type	Lowrise Apartment
Style	Single Level Apartment
Status	Active

Community Information

Address	408 9519 160 Avenue
Area	Edmonton
Subdivision	Eaux Claires
City	Edmonton
County	ALBERTA
Province	AB
Postal Code	T5Z 0M4

Amenities

Amenities	Deck, Parking-Visitor, Secured Parking
Parking	Heated, Insulated, Underground

Interior

Interior Features	ensuite bathroom
Appliances	Dishwasher-Built-In, Dryer, Microwave Hood Fan, Refrigerator, Stove-Electric, Window Coverings
Heating	Forced Air-1, Natural Gas
# of Stories	4
Stories	4
Has Basement	Yes
Basement	None, No Basement

Exterior

Exterior	Wood, Stone, Vinyl
Exterior Features	Landscaped, Park/Reserve, Playground Nearby, Public Transportation, Schools, Shopping Nearby
Roof	Tar & Gravel
Construction	Wood, Stone, Vinyl
Foundation	Concrete Perimeter

School Information

Elementary	Florence Hallock
Middle	Florence Hallock

High Queen Elizabeth

Additional Information

Date Listed April 4th, 2025
Days on Market 27
Zoning Zone 28
Condo Fee \$475

DATA IS DEEMED RELIABLE BUT IS NOT GUARANTEED ACCURATE BY THE REALTORS® ASSOCIATION OF EDMONTON. COPYRIGHT 2025 BY THE REALTORS® ASSOCIATION OF EDMONTON. ALL RIGHTS RESERVED.Trademarks are owned or controlled by the Canadian Real Estate Association (CREA) and identify real estate professionals who are members of CREA (REALTOR®, REALTORS®) and/or the quality of services they provide (MLS®, Multiple Listing Service®)
Listing information last updated on May 1st, 2025 at 12:03pm MDT