

\$139,702 - Nw 31-46-1-w5, Rural Wetaskiwin County

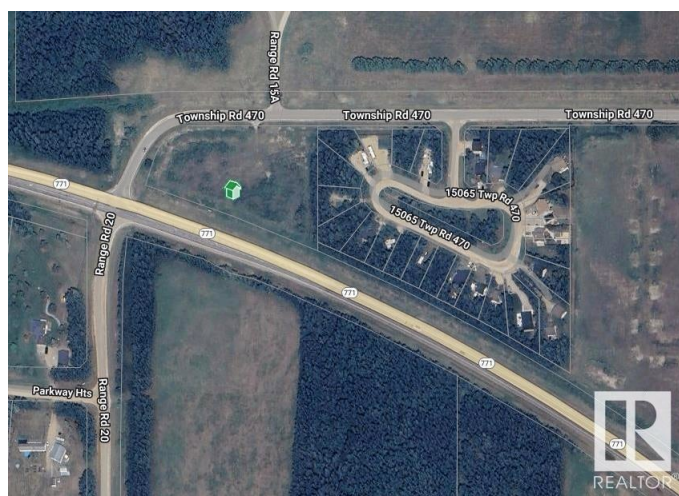
MLS® #E4424210

\$139,702

0 Bedroom, 0.00 Bathroom,
Land Commercial on 0.00 Acres

Village at Pigeon Lake, Rural Wetaskiwin
County, AB

2.94 ACRES. Zoned RC (Rural Commercial).
Great Traffic Location. Prime for C-Store, Etc.



Essential Information

MLS® #	E4424210
Price	\$139,702
Bathrooms	0.00
Acres	0.00
Type	Land Commercial
Status	Active

Community Information

Address	Nw 31-46-1-w5
Area	Rural Wetaskiwin County
Subdivision	Village at Pigeon Lake
City	Rural Wetaskiwin County
County	ALBERTA
Province	AB
Postal Code	T0C 2C0

Additional Information

Date Listed	March 5th, 2025
Days on Market	176
Zoning	Zone 95

DATA IS DEEMED RELIABLE BUT IS NOT GUARANTEED ACCURATE BY THE REALTORS® ASSOCIATION OF EDMONTON. COPYRIGHT 2025 BY THE REALTORS® ASSOCIATION OF EDMONTON. ALL RIGHTS

RESERVED.Trademarks are owned or controlled by the Canadian Real Estate Association (CREA) and identify real estate professionals who are members of CREA (REALTOR®, REALTORS®) and/or the quality of services they provide (MLS®, Multiple Listing Service®)

Listing information last updated on August 28th, 2025 at 1:17am MDT