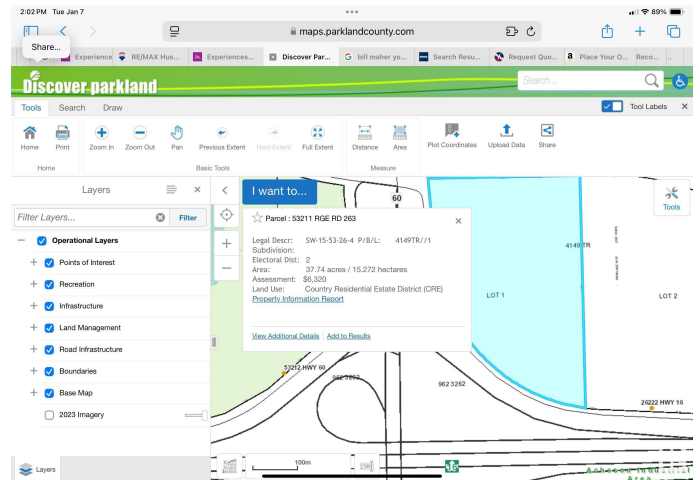


**\$15,000,000**

Acheson Business Park, Rural Parkland  
County, AB

40 acres Highway Commercial for Sale. Seller may finance up to 75% of gross sale price to qualified buyer there is income from leasing the land



## Essential Information

|           |                 |
|-----------|-----------------|
| MLS® #    | E4417639        |
| Price     | \$15,000,000    |
| Bathrooms | 0.00            |
| Acres     | 0.00            |
| Type      | Land Commercial |
| Status    | Active          |

## Community Information

|             |                       |
|-------------|-----------------------|
| Address     | 53211 Rr263           |
| Area        | Rural Parkland County |
| Subdivision | Acheson Business Park |
| City        | Rural Parkland County |
| County      | ALBERTA               |
| Province    | AB                    |
| Postal Code | T7Z 1R1               |

### Additional Information

|                |                   |
|----------------|-------------------|
| Date Listed    | January 8th, 2025 |
| Days on Market | 231               |
| Zoning         | Zone 70           |

| Discover parkland  |                       |                                     |
|--|-----------------------|-------------------------------------|
| Property/Land Information  |                       |                                     |
| <b>Location Details</b>  |                       |                                     |
| MUNICIPAL ADDRESS: 53211 RGE RD 263  |                       |                                     |
| LEGAL ADDRESS: SW-15-53-26-4   |                       |                                     |
| LOT: 1   | BLOCK:                | PLAN: 4149TR                        |
| SUBDIVISION:   | Zoning:               | Country Residential Estate District |
| <b>Property/Land Details</b>   |                       |                                     |
| ACRES: 37.74   | HECTARES: 15.272      |                                     |
| ASSESSMENT: \$6,320  | ASSESSMENT YEAR: 2023 |                                     |
| ELECTORAL DIVISION: 2  |                       |                                     |
|  |                       |                                     |
| <p>While a great deal of effort has been made by Parkland County to ensure that our digital data is of the highest quality, it is of course possible that there are errors, omissions or inconsistencies. The data is continually being updated and enhanced. If a problem with the data is found, please help us correct the matter by sending a "Problem Report" to <a href="mailto:gissupport@parklandcounty.com">gissupport@parklandcounty.com</a></p> |                       |                                     |

DATA IS DEEMED RELIABLE BUT IS NOT GUARANTEED ACCURATE BY THE REALTORS® ASSOCIATION OF EDMONTON. COPYRIGHT 2025 BY THE REALTORS® ASSOCIATION OF EDMONTON. ALL RIGHTS RESERVED.Trademarks are owned or controlled by the Canadian Real Estate Association (CREA) and identify real estate professionals who are members of CREA (REALTOR®, REALTORS®) and/or the quality of services they provide (MLS®, Multiple Listing Service®)

Listing information last updated on August 27th, 2025 at 9:17pm MDT