

\$0 - 24521 Twp Rd 510, Nisku

MLS® #E4417378

\$0

0 Bedroom, 0.00 Bathroom,
Industrial on 0.00 Acres

None, Nisku, AB

LEASE OPPORTUNITY! 56,546 sq. ft warehouse and office on 3.65 acres. Large open span warehouse equipped with 5 - ton crane. Multiple offices and reception area. Large graveled fenced yard with option of additional land available. Lots of parking. Office and warehouse are demisable.

Built in 2007

Essential Information

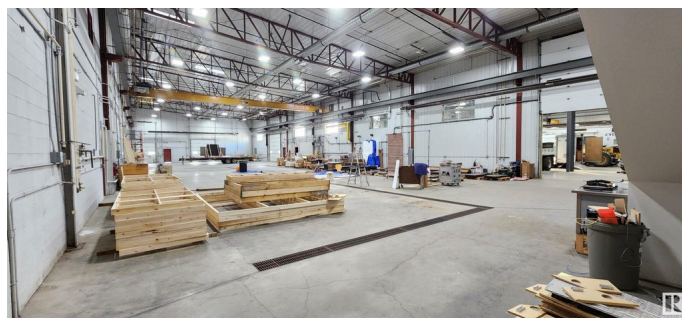
| | |
|------------|------------|
| MLS® # | E4417378 |
| Bathrooms | 0.00 |
| Acres | 0.00 |
| Year Built | 2007 |
| Type | Industrial |
| Status | Active |

Community Information

| | |
|-------------|------------------|
| Address | 24521 Twp Rd 510 |
| Area | Nisku |
| Subdivision | None |
| City | Nisku |
| County | ALBERTA |
| Province | AB |
| Postal Code | T6X 4N6 |

Exterior

| | |
|----------|-------------|
| Exterior | See Remarks |
|----------|-------------|



Construction See Remarks

Additional Information

Date Listed January 6th, 2025
Days on Market 115
Zoning Zone 80

DATA IS DEEMED RELIABLE BUT IS NOT GUARANTEED ACCURATE BY THE REALTORS® ASSOCIATION OF EDMONTON. COPYRIGHT 2025 BY THE REALTORS® ASSOCIATION OF EDMONTON. ALL RIGHTS RESERVED.Trademarks are owned or controlled by the Canadian Real Estate Association (CREA) and identify real estate professionals who are members of CREA (REALTOR®, REALTORS®) and/or the quality of services they provide (MLS®, Multiple Listing Service®)
Listing information last updated on May 1st, 2025 at 7:32am MDT