

## \$450,000 - 5316 129 Avenue, Edmonton

---

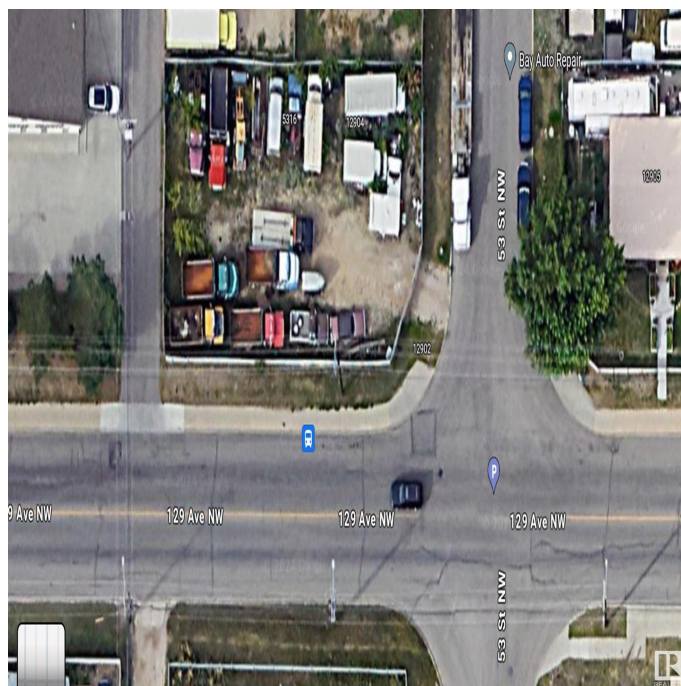
MLS® #E4402897

**\$450,000**

0 Bedroom, 0.00 Bathroom,  
Land Commercial on 0.00 Acres

Kennedale Industrial, Edmonton, AB

Corner lot location, "2" lots side by side. There are many options for use from multifamily with shops, retail, stores, restaurants, pub, cafe, business offices, commercial buildings, trucking, storage yard, etc.... with City of Edmonton zoning approval. Present zoning "BE". Access to traffic in any direction with the new "Fort Road" for commuting and the LRT Station. This property is located to take advantage of all transportation corridors; close to 50 Street; Yellowhead Hwy and Hwy 16 or 137 Avenue; Manning Drive and Hwy 15



### Essential Information

|           |                 |
|-----------|-----------------|
| MLS® #    | E4402897        |
| Price     | \$450,000       |
| Bathrooms | 0.00            |
| Acres     | 0.00            |
| Type      | Land Commercial |
| Status    | Active          |

### Community Information

|             |                      |
|-------------|----------------------|
| Address     | 5316 129 Avenue      |
| Area        | Edmonton             |
| Subdivision | Kennedale Industrial |
| City        | Edmonton             |
| County      | ALBERTA              |
| Province    | AB                   |

Postal Code           T5A 0A3

**Additional Information**

Date Listed           August 19th, 2024

Days on Market     301

Zoning               Zone 06

DATA IS DEEMED RELIABLE BUT IS NOT GUARANTEED ACCURATE BY THE REALTORS® ASSOCIATION OF EDMONTON. COPYRIGHT 2025 BY THE REALTORS® ASSOCIATION OF EDMONTON. ALL RIGHTS RESERVED.Trademarks are owned or controlled by the Canadian Real Estate Association (CREA) and identify real estate professionals who are members of CREA (REALTOR®, REALTORS®) and/or the quality of services they provide (MLS®, Multiple Listing Service®)

Listing information last updated on June 16th, 2025 at 2:32pm MDT