

# \$199,900 - 4709 20 Avenue, Drayton Valley

MLS® #E4385238

**\$199,900**

0 Bedroom, 0.00 Bathroom,  
Land Commercial on 0.00 Acres

Drayton Valley, Drayton Valley, AB

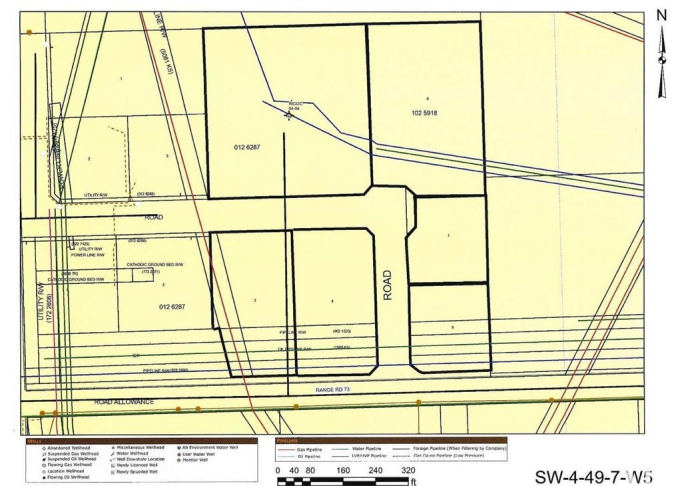
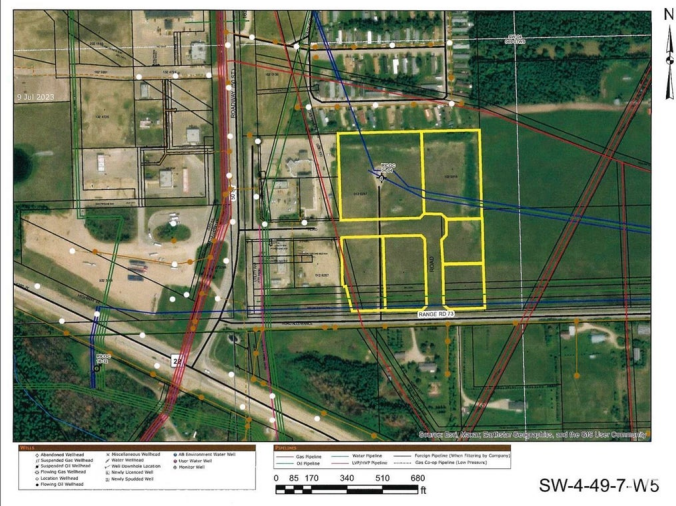
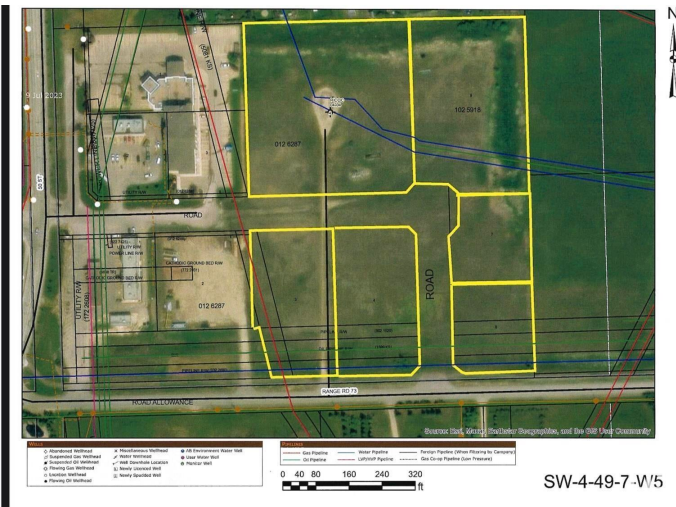
Put your stamp on this commercial subdivision in one of Drayton Valleys best locations! Highly visible lots just off Hwy 22 and next to multiple National Franchises such as restaurants & Hotel chains. All 6 commercial lots located at the main entrance on the south end of Drayton Valley are included with this sale. Each lot is separately titled. Each lot varies in size, starting at .96 acres in size, up to 3.85 acres, a total of approx 11.69 acres! Town services are at the corner of a neighbouring lot which is also for sale.(MLS# E4385222). With this package, revenue of \$15,000.00 annually will be transferred to the buyer from lots 4708-20th ave & 4705-20th ave. All lots zoned Commercial - Business

## Essential Information

MLS® #	E4385238
Price	\$199,900
Bathrooms	0.00
Acres	0.00
Type	Land Commercial
Status	Active

## Community Information

Address	4709 20 Avenue
Area	Drayton Valley



Subdivision	Drayton Valley
City	Drayton Valley
County	ALBERTA
Province	AB
Postal Code	T7A 0C5

### **Additional Information**

Date Listed	May 2nd, 2024
Days on Market	365
Zoning	Zone 90

DATA IS DEEMED RELIABLE BUT IS NOT GUARANTEED ACCURATE BY THE REALTORS® ASSOCIATION OF EDMONTON. COPYRIGHT 2025 BY THE REALTORS® ASSOCIATION OF EDMONTON. ALL RIGHTS RESERVED. Trademarks are owned or controlled by the Canadian Real Estate Association (CREA) and identify real estate professionals who are members of CREA (REALTOR®, REALTORS®) and/or the quality of services they provide (MLS®, Multiple Listing Service®)

Listing information last updated on May 1st, 2025 at 10:47pm MDT